

## Product datasheet for **AR50993PU-N**

### CDK3 (1-305, His-tag) Human Protein

#### Product data:

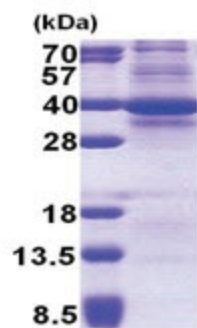
Product Type:	Recombinant Proteins
Description:	CDK3 (1-305, His-tag) human protein, 0.25 mg
Species:	Human
Expression Host:	E. coli
Expression cDNA Clone or AA Sequence:	MGSSHHHHHH SSGLVPRGSH MGSMDMFQKV EKIGEGTYGV VYKAKNRETG QLVALKKIRL DLEMEGVPST AIREISLLKE LKHPNIVRLL DVVHNERKLY LVFEFLSQDL KKYMDSTPGS ELPLHLIKSY LFQLLQGVSF CHSHRVIHRD LKPQNLLINE LGAIKLADFG LARAFGVPLR TYTHEVTLW YRAPEILLGS KFYTTAVDIW SIGCIFAEMV TRKALFPGDS EIDQLFRIFR MLGTPSEDTW PGVTQLPDYK GSFPKWTRKG LEEIVPNLEP EGRDLLMQLL QYDPSQRITA KTAHAHPYFS SPEPSAARQ YVLQRFRRH
Tag:	His-tag
Predicted MW:	37.4 kDa
Concentration:	lot specific
Purity:	>85% by SDS - PAGE
Buffer:	Presentation State: Purified State: Liquid purified protein Buffer System: 20 mM Tris-HCl buffer (pH 8.0) containing 1M Urea, 10% glycerol
Preparation:	Liquid purified protein
Storage:	Store undiluted at 2-8°C for one week or (in aliquots) at -20°C to -80°C for longer. Avoid repeated freezing and thawing.
Stability:	Shelf life: one year from despatch.
RefSeq:	<a href="#">NP_001249</a>
Locus ID:	1018
UniProt ID:	<a href="#">Q00526</a>
Cytogenetics:	17q25.1
Summary:	This gene encodes a member of the cyclin-dependent protein kinase family. The protein promotes entry into S phase, in part by activating members of the E2F family of transcription factors. The protein also associates with cyclin C and phosphorylates the retinoblastoma 1 protein to promote exit from G0. [provided by RefSeq, Jul 2008]



[View online »](#)

Protein Families: Druggable Genome, Protein Kinase

**Product images:**



15% SDS-PAGE (3ug)