

Product datasheet for **AR50972PU-S**

CPPED1 (1-314, His-tag) Human Protein

Product data:

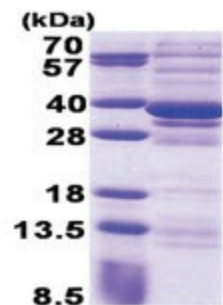
Product Type:	Recombinant Proteins
Description:	CPPED1 (1-314, His-tag) human protein, 0.1 mg
Species:	Human
Expression Host:	E. coli
Expression cDNA Clone or AA Sequence:	MGSSHHHHHH SSGLVPRGSH MGSMSAAEAG GVFHRARGRT LAAFPAEKES EWKGPFFYFIL GADPQFGLIK AWSTGDCDNG GDEWEQEIRL TEQAVQAINK LNPCKKFFVL CGDLIHAMPG KPWRTEQTED LKRVLRAVDR AIPLVLVSGN HDIGNTPAE TVEEFCRTWG DDYFSFWVGG VLFLVLSQF YENPSKCP SL KQAQDQWLDE QLSIARQRHC QHAIVFQHIP LFLESIDEDD DYYFNLSKST RKKLADKFIH AGVKVVFSGH YHRNAGGTYQ NLDMMVSSAI GCQLGRDPHG LRVVVTAEK IVHRYSLDE LSEKGIEDDL MDLIKKK
Tag:	His-tag
Predicted MW:	37.9 kDa
Concentration:	lot specific
Purity:	>85% by SDS - PAGE
Buffer:	Presentation State: Purified State: Liquid purified protein Buffer System: 20 mM Tris-HCl buffer (pH 8.0) containing 0.15M NaCl, 20% glycerol
Preparation:	Liquid purified protein
Storage:	Store undiluted at 2-8°C for one week or (in aliquots) at -20°C to -80°C for longer. Avoid repeated freezing and thawing.
Stability:	Shelf life: one year from despatch.
RefSeq:	NP_001092925
Locus ID:	55313
UniProt ID:	Q9BRF8
Cytogenetics:	16p13.12
Synonyms:	CSTP1



[View online »](#)

Summary:

Protein phosphatase that dephosphorylates AKT family kinase specifically at 'Ser-473', blocking cell cycle progression and promoting cell apoptosis. May play an inhibitory role in glucose uptake by adipocytes.[UniProtKB/Swiss-Prot Function]

Product images:

15% SDS-PAGE (3ug)