

## Product datasheet for **AR50971PU-N**

### C1D (1-141, His-tag) Human Protein

#### Product data:

Product Type:	Recombinant Proteins
Description:	C1D (1-141, His-tag) human protein, 0.25 mg
Species:	Human
Expression Host:	E. coli
Expression cDNA Clone or AA Sequence:	MGSSHHHHHH SSGLVPRGSH MGSMAGEEIN EDYPVEIHEY LSAFENSIGA VDEMLKTMMS VSRNELLQKL DPLEQAKVDL VSAYTLNSMF WYLATQGVN PKEHPVKQEL ERIRVYMNRV KEITDKKKAG KLDRGAASRF VKNALWEPKS KNASKVANKG KSKS
Tag:	His-tag
Predicted MW:	18.4 kDa
Concentration:	lot specific
Purity:	>85% by SDS - PAGE
Buffer:	Presentation State: Purified State: Liquid purified protein Buffer System: 20 mM Tris-HCl buffer (pH 8.0) containing 0.2M NaCl, 50% glycerol, 2 mM DTT
Preparation:	Liquid purified protein
Storage:	Store undiluted at 2-8°C for one week or (in aliquots) at -20°C to -80°C for longer. Avoid repeated freezing and thawing.
Stability:	Shelf life: one year from despatch.
RefSeq:	<a href="#">NP_001177192</a>
Locus ID:	10438
UniProt ID:	<a href="#">Q13901</a>
Cytogenetics:	2p14
Synonyms:	hC1D; LRP1; Rrp47; SUN-CoR; SUNCOR



[View online »](#)

**Summary:**

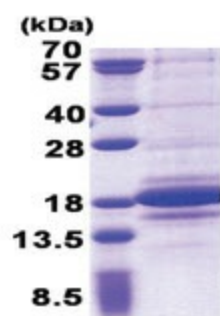
The protein encoded by this gene is a DNA binding and apoptosis-inducing protein and is localized in the nucleus. It is also a Rac3-interacting protein which acts as a corepressor for the thyroid hormone receptor. This protein is thought to regulate TRAX/Translin complex formation. Alternate splicing results in multiple transcript variants that encode the same protein. Multiple pseudogenes of this gene are found on chromosome 10.[provided by RefSeq, Jun 2010]

**Protein Families:**

Druggable Genome

**Protein Pathways:**

RNA degradation

**Product images:**

15% SDS-PAGE (3ug)