

## Product datasheet for **AR50968PU-S**

### glpE (1-108, His-tag) Escherichia coli Protein

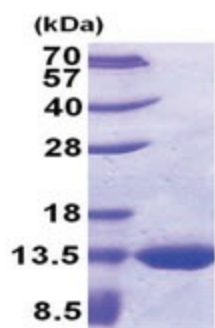
#### Product data:

Product Type:	Recombinant Proteins
Description:	glpE (1-108, His-tag) protein, 0.1 mg
Species:	Escherichia coli
Expression Host:	E. coli
Expression cDNA Clone or AA Sequence:	MGSSHHHHHH SSGLVPRGSH MGSMDQFECI NVADAHQKLQ EKEAVLVDIR DPQSFAMGHA VQAFHLTNDT LGAFMRDNDF DTPVMVMCYH GNSSKGAAQY LLQQGYDVVY SIDGGFEAWQ RQFPAEVAYG A
Tag:	His-tag
Predicted MW:	14.5 kDa
Concentration:	lot specific
Purity:	>95% by SDS - PAGE
Buffer:	Presentation State: Purified State: Liquid purified protein Buffer System: 20 mM Tris-HCl buffer (pH 8.0) containing 10% glycerol
Preparation:	Liquid purified protein
Storage:	Store undiluted at 2-8°C for one week or (in aliquots) at -20°C to -80°C for longer. Avoid repeated freezing and thawing.
Stability:	Shelf life: one year from despatch.
Summary:	Thiosulfate:cyanide sulfurtransferase (rhodanese), also known as glpE, is a mitochondrial matrix enzyme that is encoded by the nucleus. glpE catalyzes the sulfur-transfer reaction in which a sulfur atom is transferred from thiosulfate to cyanide by a double



[View online »](#)

**Product images:**



15% SDS-PAGE (3ug)