

## Product datasheet for **AR50968PU-N**

### glpE (1-108, His-tag) Escherichia coli Protein

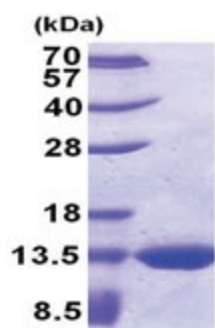
#### Product data:

<b>Product Type:</b>	Recombinant Proteins
<b>Description:</b>	glpE (1-108, His-tag) protein, 0.5 mg
<b>Species:</b>	Escherichia coli
<b>Expression Host:</b>	E. coli
<b>Expression cDNA Clone or AA Sequence:</b>	MGSSHHHHHH SSGLVPRGSH MGSMDQFECI NVADAHQKLQ EKEAVLVDIR DPQSFAMGHA VQAFHLTNDT LGAFMRDNDF DTPVMVMCYH GNSSKGAAQY LLQQGYDVVY SIDGGFEAWQ RQFPAEVAYG A
<b>Tag:</b>	His-tag
<b>Predicted MW:</b>	14.5 kDa
<b>Concentration:</b>	lot specific
<b>Purity:</b>	>95% by SDS - PAGE
<b>Buffer:</b>	Presentation State: Purified State: Liquid purified protein Buffer System: 20 mM Tris-HCl buffer (pH 8.0) containing 10% glycerol
<b>Preparation:</b>	Liquid purified protein
<b>Storage:</b>	Store undiluted at 2-8°C for one week or (in aliquots) at -20°C to -80°C for longer. Avoid repeated freezing and thawing.
<b>Stability:</b>	Shelf life: one year from despatch.
<b>Summary:</b>	Thiosulfate:cyanide sulfurtransferase (rhodanese), also known as glpE, is a mitochondrial matrix enzyme that is encoded by the nucleus. glpE catalyzes the sulfur-transfer reaction in which a sulfur atom is transferred from thiosulfate to cyanide by a double



[View online »](#)

**Product images:**



15% SDS-PAGE (3ug)