

Product datasheet for **AR50966PU-S**

Stanniocalcin 2 / STC2 (25-302, His-tag) Human Protein

Product data:

| | |
|---------------------------------------|---|
| Product Type: | Recombinant Proteins |
| Description: | Stanniocalcin 2 / STC2 (25-302, His-tag) human protein, 0.1 mg |
| Species: | Human |
| Expression Host: | E. coli |
| Expression cDNA Clone or AA Sequence: | MGSSHHHHHH SSGLVPRGSH MGSTDATNPP EGPQDRSSQK KGRLSLQNTA EIQHCLVNAG DVGCGVFECF ENNSCEIRGL HGICMTFLHN AGKFDAQGKS FIKDALKCKA HALRHRFGCI SRKCPAIREM VSQVQCEQNW GSLCSILSFC TSAIQKPPTA PPERQPQVDR TKLSRAHHGE AGHHLPEPSS RETGRGAKGE RGSKSHPNNAH ARGRVGGGLGA QGPSGSSEWE DEQSEYSDIR R |
| Tag: | His-tag |
| Predicted MW: | 33 kDa |
| Concentration: | lot specific |
| Purity: | >85% by SDS - PAGE |
| Buffer: | Presentation State: Purified State: Liquid purified protein Buffer System: 20 mM Tris-HCl buffer (pH 8.0) containing 0.25M NaCl, 30% glycerol, 1 mM DTT |
| Preparation: | Liquid purified protein |
| Storage: | Store undiluted at 2-8°C for one week or (in aliquots) at -20°C to -80°C for longer. Avoid repeated freezing and thawing. |
| Stability: | Shelf life: one year from despatch. |
| RefSeq: | NP_003705 |
| Locus ID: | 8614 |
| UniProt ID: | O76061 , Q6FHC9 |
| Cytogenetics: | 5q35.2 |
| Synonyms: | STC-2; STCRP |



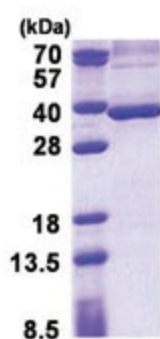
[View online »](#)

Summary:

This gene encodes a secreted, homodimeric glycoprotein that is expressed in a wide variety of tissues and may have autocrine or paracrine functions. The encoded protein has 10 of its 15 cysteine residues conserved among stanniocalcin family members and is phosphorylated by casein kinase 2 exclusively on its serine residues. Its C-terminus contains a cluster of histidine residues which may interact with metal ions. The protein may play a role in the regulation of renal and intestinal calcium and phosphate transport, cell metabolism, or cellular calcium/phosphate homeostasis. Constitutive overexpression of human stanniocalcin 2 in mice resulted in pre- and postnatal growth restriction, reduced bone and skeletal muscle growth, and organomegaly. Expression of this gene is induced by estrogen and altered in some breast cancers. [provided by RefSeq, Jul 2008]

Protein Families:

Druggable Genome, Secreted Protein

Product images:

15% SDS-PAGE (3ug)