

## Product datasheet for **AR50934PU-N**

### SULT1C4 / SULT1C2 (1-302, His-tag) Human Protein

#### Product data:

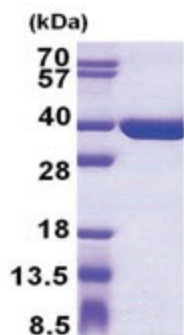
Product Type:	Recombinant Proteins
Description:	SULT1C4 / SULT1C2 (1-302, His-tag) human protein, 0.5 mg
Species:	Human
Expression Host:	E. coli
Expression cDNA Clone or AA Sequence:	MGSSHHHHHH SSGLVPRGSH MALHDMEDFT FDGTRKLSVN YVKGILQPTD TCDIWDKIWN FQAKPDDLLI STYPKAGTTW TQEIVELIQN EGDVEKSKRA PTHQRFPFLE MKIPSLGSGLEQAHAMPSPR ILKTHLPFHL LPPSLEKNC KIIYVARNPK DNMVSYHFFQ RMNKALPAPG TWEEYFETFL AGKVCWGSWH EHVKGWWEAK DKHRILYLFY EDMKKNPKHE IQKLAEFIGK KLDDKVLDKI VHYTSFDVMK QNPMANYSSI PAEIMDHSIS PFMKRGAVGD WKKHFTVAQN ERFDEYKKK MTDTRLTFHF QF
Tag:	His-tag
Predicted MW:	37.6 kDa
Concentration:	lot specific
Purity:	>95% by SDS - PAGE
Buffer:	Presentation State: Purified State: Liquid purified protein Buffer System: 20 mM Tris-HCl buffer (pH 8.0) containing 0.1M NaCl, 20% glycerol, 1 mM DTT
Preparation:	Liquid purified protein
Storage:	Store undiluted at 2-8°C for one week or (in aliquots) at -20°C to -80°C for longer. Avoid repeated freezing and thawing.
Stability:	Shelf life: one year from despatch.
RefSeq:	<a href="#">NP_006579</a>
Locus ID:	27233
UniProt ID:	<a href="#">O75897</a>
Cytogenetics:	2q12.3
Synonyms:	SULT1C; SULT1C2



[View online »](#)

**Summary:**

Sulfotransferase enzymes catalyze the sulfate conjugation of many hormones, neurotransmitters, drugs, and xenobiotic compounds. These cytosolic enzymes are different in their tissue distributions and substrate specificities. The gene structure (number and length of exons) is similar among family members. This gene encodes a protein that belongs to the SULT1 subfamily, responsible for transferring a sulfo moiety from PAPS to phenol-containing compounds. [provided by RefSeq, Jul 2008]

**Product images:**

15% SDS-PAGE (3ug)