

## Product datasheet for **AR50891PU-S**

### ROBLD3 (1-125, His-tag) Human Protein

#### Product data:

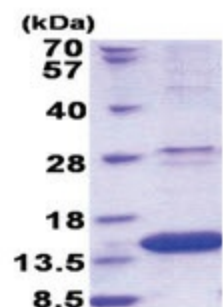
Product Type:	Recombinant Proteins
Description:	ROBLD3 (1-125, His-tag) human recombinant protein, 50 µg
Species:	Human
Expression Host:	E. coli
Expression cDNA Clone or AA Sequence:	MGSSHHHHHH SSGLVPRGSH MGSMLRPKAL TQVLSQANTG GVQSTLLLNN EGSLLAYSGY GDTDARVTAA IASNIWAAYD RNGNQAFNED NLKFILMDCM EGRVAITRVA NLLLCMYAKE TVGFGMLKAK AQALVQYLEE PLTQVAAS
Tag:	His-tag
Predicted MW:	15.9 kDa
Concentration:	lot specific
Purity:	>90% by SDS - PAGE
Buffer:	Presentation State: Purified State: Liquid purified protein Buffer System: 20 mM Tris-HCl buffer (pH 8.0) containing 0.15M NaCl, 10% glycerol, 1 mM DTT
Preparation:	Liquid purified protein
Protein Description:	Recombinant human LAMTOR2 protein, fused to His-tag at N-terminus, was expressed in E.coli and purified by using conventional chromatography techniques.
Storage:	Store undiluted at 2-8°C for one week or (in aliquots) at -20°C to -80°C for longer. Avoid repeated freezing and thawing.
Stability:	Shelf life: one year from despatch.
RefSeq:	<a href="#">NP_001138736</a>
Locus ID:	28956
UniProt ID:	<a href="#">Q9Y2Q5</a>
Cytogenetics:	1q22
Synonyms:	ENDAP; HSPC003; MAPBPIP; MAPKSP1AP; p14; Ragulator2; ROBLD3



[View online »](#)

**Summary:**

The product of this gene is highly conserved with a mouse protein associated with the cytoplasmic face of late endosomes and lysosomes. The mouse protein interacts with MAPK scaffold protein 1, a component of the mitogen-activated protein kinase pathway. In humans, a mutation in this gene has been associated with a primary immunodeficiency syndrome, and suggests a role for this protein in endosomal biogenesis. Multiple transcript variants encoding different isoforms have been found for this gene. [provided by RefSeq, Feb 2009]

**Product images:**

15% SDS-PAGE (3ug)