

Product datasheet for **AR50885PU-S**

Gastric inhibitory polypeptide (22-153, His-tag) Human Protein

Product data:

Product Type:	Recombinant Proteins
Description:	Gastric inhibitory polypeptide (22-153, His-tag) human recombinant protein, 50 µg
Species:	Human
Expression Host:	E. coli
Expression cDNA Clone or AA Sequence:	MGSSHHHHHH SSGLVPRGSH MGSEKKEGHF SALPSLPVGS HAKVSSPQPR GPRYAEGTFI SDYSIAMDKI HQQDFVNWLL AQKGKKNDWK HNITQREARA LELAGQANRK EEEAVEPQSS PAKNPSDEDL LRDLLIQELL ACLLDQTNLC RLRSR
Tag:	His-tag
Predicted MW:	17.3 kDa
Concentration:	lot specific
Purity:	>90% by SDS - PAGE
Buffer:	Presentation State: Purified State: Liquid purified protein Buffer System: 20 mM Tris-HCl buffer (pH 8.0) containing 50% glycerol 0.1M NaCl, 2 mM DTT
Preparation:	Liquid purified protein
Protein Description:	Recombinant human GIP protein, fused to His-tag at N-terminus, was expressed in E.coli and purified by using conventional chromatography.
Storage:	Store undiluted at 2-8°C for one week or (in aliquots) at -20°C to -80°C for longer. Avoid repeated freezing and thawing.
Stability:	Shelf life: one year from despatch.
RefSeq:	NP_004114
Locus ID:	2695
UniProt ID:	P09681
Cytogenetics:	17q21.32



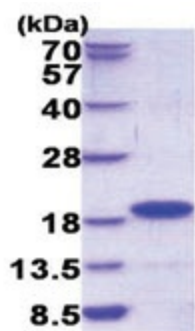
[View online »](#)

Summary:

This gene encodes an incretin hormone and belongs to the glucagon superfamily. The encoded protein is important in maintaining glucose homeostasis as it is a potent stimulator of insulin secretion from pancreatic beta-cells following food ingestion and nutrient absorption. This gene stimulates insulin secretion via its G protein-coupled receptor activation of adenylyl cyclase and other signal transduction pathways. It is a relatively poor inhibitor of gastric acid secretion. [provided by RefSeq, Jul 2008]

Protein Families:

Druggable Genome, Secreted Protein

Product images:

15% SDS-PAGE (3ug)