

## Product datasheet for **AR50883PU-S**

### EHF (1-300, His-tag) Human Protein

#### Product data:

Product Type:	Recombinant Proteins
Description:	EHF (1-300, His-tag) human recombinant protein, 50 µg
Species:	Human
Expression Host:	E. coli
Expression cDNA Clone or AA Sequence:	MGSSHHHHHH SSGLVPRGSH MGSMILEGGG VMNLNPGNNL LHQPPAWTDS YSTCNVSSGF FGGQWHEIHP QYWKYQVWE WLQHLLDTNQ LDANCIPFQE FDINGEHLCS MSLQEFTRAA GTAGQLLYSN LQHLKWNGQC SSDLFQSTHN VIVKTEQTEP SIMNTWKDEN YLYDTNYGST VDLLDSKTFC RAQISM TTS HLPVAESPDM KKEQDPPAKC HTKKHNPRGT HLWEFIRDIL LNPDKNPGLI KWEDRSEGVF RFLKSEAVAQ LWGKKKNNSS MTYEKLSRAM RYYYKREILE RVDGRRLVYK FGKNARGWRE NEN
Tag:	His-tag
Predicted MW:	37.3 kDa
Concentration:	lot specific
Purity:	>90% by SDS - PAGE
Buffer:	Presentation State: Purified State: Liquid purified protein Buffer System: 20 mM Tris-HCl buffer (pH 8.0) containing 0.4M Urea, 10% glycerol
Preparation:	Liquid purified protein
Protein Description:	Recombinant human EHF protein, fused to His-tag at N-terminus, was expressed in E.coli.
Storage:	Store undiluted at 2-8°C for one week or (in aliquots) at -20°C to -80°C for longer. Avoid repeated freezing and thawing.
Stability:	Shelf life: one year from despatch.
RefSeq:	<a href="#">NP_001193544</a>
Locus ID:	26298
UniProt ID:	<a href="#">Q9NZC4</a>
Cytogenetics:	11p13
Synonyms:	ESE3; ESE3B; ESEJ



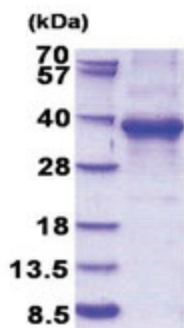
[View online »](#)

**Summary:**

This gene encodes a protein that belongs to an ETS transcription factor subfamily characterized by epithelial-specific expression (ESEs). The encoded protein acts as a transcriptional repressor and may be involved in epithelial differentiation and carcinogenesis. Three transcript variants encoding different isoforms have been found for this gene. [provided by RefSeq, Jun 2011]

**Protein Families:**

Transcription Factors

**Product images:**

15% SDS-PAGE (3ug)