

## Product datasheet for **AR50877PU-S**

### TMEM149 (23-163, His-tag) Human Protein

#### Product data:

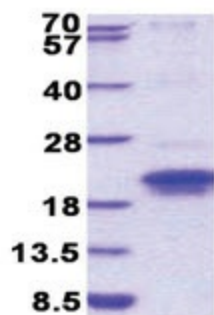
Product Type:	Recombinant Proteins
Description:	TMEM149 (23-163, His-tag) human recombinant protein, 50 µg
Species:	Human
Expression Host:	E. coli
Expression cDNA Clone or AA Sequence:	MGSSHHHHHH SSGLVPRGSH MGSSQYCGRL EYWNPDKCC SSCLQRFPPP PCPDYEFREN CGLNDHGDFV TPPFRKCSSG QCNPDGAELC SPCGGGAVTP TPAAGGG RTP WRCRERPVPA KGHCLTPGN PGAPSSQERS SPASSIAWRT PEPVPQQAWP NFLP
Tag:	His-tag
Predicted MW:	17.5 kDa
Concentration:	lot specific
Purity:	>90% by SDS - PAGE
Buffer:	Presentation State: Purified State: Liquid purified protein Buffer System: 20 mM Tris-HCl buffer (pH 7.5) containing 0.2M NaCl, 50% glycerol, 2 mM DTT
Preparation:	Liquid purified protein
Protein Description:	Recombinant human IGFLR1 protein, fused to His-tag at N-terminus, was expressed in E.coli and purified by using conventional chromatography techniques.
Storage:	Store undiluted at 2-8°C for one week or (in aliquots) at -20°C to -80°C for longer. Avoid repeated freezing and thawing.
Stability:	Shelf life: one year from despatch.
RefSeq:	<a href="#">NP_001332932</a>
Locus ID:	79713
UniProt ID:	<a href="#">K7EL86</a>
Cytogenetics:	19q13.12
Synonyms:	TMEM149
Summary:	Probable cell membrane receptor for the IGF-like family proteins. Binds IGFL1 and IGFL3 with a higher affinity. May also bind IGFL2.[UniProtKB/Swiss-Prot Function]



[View online »](#)

Protein Families: Transmembrane

**Product images:**



15% SDS-PAGE (3ug)