

## Product datasheet for **AR50870PU-S**

### ID1 / BHLHB24 (1-155, His-tag) Human Protein

#### Product data:

<b>Product Type:</b>	Recombinant Proteins
<b>Description:</b>	ID1 / BHLHB24 (1-155, His-tag) human recombinant protein, 50 µg
<b>Species:</b>	Human
<b>Expression Host:</b>	E. coli
<b>Expression cDNA Clone or AA Sequence:</b>	MGSSHHHHHH SSGLVPRGSH MGSMKVASGS TATAAAGPSC ALKAGKTASG AGEVWRCLSE QSVAISRCAG GAGARLPALL DEQQVNVLLY DMNGCYSRLK ELVPTLPQNR KVSKVEILQH VIDYIRDLQL ELNSESEVGT PGGRGLPVRA PLSTLNGEIS ALTAEAACVP ADDRILCR
<b>Tag:</b>	His-tag
<b>Predicted MW:</b>	18.5 kDa
<b>Concentration:</b>	lot specific
<b>Purity:</b>	>85% by SDS - PAGE
<b>Buffer:</b>	Presentation State: Purified State: Liquid purified protein Buffer System: 20 mM Tris-HCl buffer (pH 8.0) containing 0.15M NaCl, 10% glycerol, 1 mM DTT
<b>Preparation:</b>	Liquid purified protein
<b>Protein Description:</b>	Recombinant human ID1 protein, fused to His-tag at N-terminus, was expressed in E.coli and purified by using conventional chromatography techniques.
<b>Storage:</b>	Store undiluted at 2-8°C for one week or (in aliquots) at -20°C to -80°C for longer. Avoid repeated freezing and thawing.
<b>Stability:</b>	Shelf life: one year from despatch.
<b>RefSeq:</b>	<a href="#">NP_002156</a>
<b>Locus ID:</b>	3397
<b>UniProt ID:</b>	<a href="#">P41134</a>
<b>Cytogenetics:</b>	20q11.21
<b>Synonyms:</b>	DNA-binding protein inhibitor ID-1, Inhibitor of DNA binding 1



[View online »](#)

**Summary:**

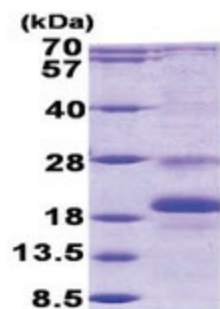
The protein encoded by this gene is a helix-loop-helix (HLH) protein that can form heterodimers with members of the basic HLH family of transcription factors. The encoded protein has no DNA binding activity and therefore can inhibit the DNA binding and transcriptional activation ability of basic HLH proteins with which it interacts. This protein may play a role in cell growth, senescence, and differentiation. Two transcript variants encoding different isoforms have been found for this gene. [provided by RefSeq, Jul 2008]

**Protein Families:**

Druggable Genome, Transcription Factors

**Protein Pathways:**

TGF-beta signaling pathway

**Product images:**

15% SDS-PAGE (3ug)