

Product datasheet for **AR50869PU-N**

Sperm protein 17 (SP17) (1-151, His-tag) Human Protein

Product data:

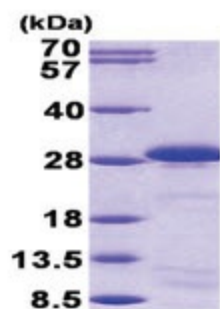
Product Type:	Recombinant Proteins
Description:	Sperm protein 17 (SP17) (1-151, His-tag) human recombinant protein, 0.5 mg
Species:	Human
Expression Host:	E. coli
Expression cDNA Clone or AA Sequence:	MGSSHHHHHH SSGLVPRGSH MGSMSIPFSN THYRIPQGFG NLLEGLTREI LREQPDNIPA FAAAYFESLL EKREKTNFDP AEWGSKVEDR FYNNHAFEEQ EPPEKSDPKQ EESQISGKEE ETSVTILDSS EEDKEKEEVA AVKIQAAPFRG HIAREEAKKM KTNSLQNEEK EENK
Tag:	His-tag
Predicted MW:	19.8 kDa
Concentration:	lot specific
Purity:	>90% by SDS - PAGE
Buffer:	Presentation State: Purified State: Liquid purified protein Buffer System: 20 mM Tris-HCl buffer (pH 8.0) containing 0.15M NaCl, 10% glycerol, 1 mM DTT
Preparation:	Liquid purified protein
Protein Description:	Recombinant human SPA17 protein, fused to His-tag at N-terminus, was expressed in E.coli and purified by using conventional chromatography techniques.
Storage:	Store undiluted at 2-8°C for one week or (in aliquots) at -20°C to -80°C for longer. Avoid repeated freezing and thawing.
Stability:	Shelf life: one year from despatch.
RefSeq:	NP_059121
Locus ID:	53340
UniProt ID:	Q15506 , A0A172Q397
Cytogenetics:	11q24.2
Synonyms:	CT22; SP17; SP17-1



[View online »](#)

Summary:

This gene encodes a protein present at the cell surface. The N-terminus has sequence similarity to human cAMP-dependent protein kinase A (PKA) type II alpha regulatory subunit (RIIa) while the C-terminus has an IQ calmodulin-binding motif. The central portion of the protein has carbohydrate binding motifs and likely functions in cell-cell adhesion. The protein was initially characterized by its involvement in the binding of sperm to the zona pellucida of the oocyte. Recent studies indicate that it is also involved in additional cell-cell adhesion functions such as immune cell migration and metastasis. A retrotransposed pseudogene is present on chromosome 10q22.[provided by RefSeq, Jan 2009]

Product images:

15% SDS-PAGE (3ug)