

## Product datasheet for **AR50825PU-S**

### Endothelin-2 (25-178, His-tag) Human Protein

#### Product data:

Product Type:	Recombinant Proteins
Description:	Endothelin-2 (25-178, His-tag) human recombinant protein, 0.1 mg
Species:	Human
Expression Host:	E. coli
Expression cDNA Clone or AA Sequence:	MGSSHHHHHH SSGLVPRGSH MGSQAAATLE QPASSSHAQG THLRLRRCSC SSWLDKECV FCHLDIIVVN TPEQTAPYGL GNPPRRRRRS LPRRCQCSSA RDPACATFCL RRPWTEAGAV PSRKSPADV FQTGKTGATTG ELLQRLDIS TVKSLFAKRQ QEAMREPRST HSRWRKR
Tag:	His-tag
Predicted MW:	19.9 kDa
Concentration:	lot specific
Purity:	>85% by SDS - PAGE
Buffer:	Presentation State: This purified protein is available in a denatured form, making it less suitable for functional studies. Denatured proteins are better suited for applications like Western Blot (WB) or imaging assays. State: Liquid purified protein Buffer System: 20 mM Tris-HCl buffer (pH 8.0) containing 0.4M urea, 10% glycerol
Preparation:	Liquid purified protein
Protein Description:	Recombinant human EDN2 protein, fused to His-tag at N-terminus, was expressed in E.coli.
Storage:	Store undiluted at 2-8°C for one week or (in aliquots) at -20°C to -80°C for longer. Avoid repeated freezing and thawing.
Stability:	Shelf life: one year from despatch.
RefSeq:	<a href="#">NP_001289198</a>
Locus ID:	1907
UniProt ID:	<a href="#">P20800</a>
Cytogenetics:	1p34.2
Synonyms:	EDN2, Preproendothelin-2, PPET2



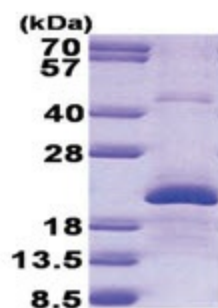
[View online »](#)

**Summary:**

This gene encodes a member of the endothelin protein family of secretory vasoconstrictive peptides. The preproprotein is processed to a short mature form which functions as a ligand for the endothelin receptors that initiate intracellular signaling events. This gene product is involved in a wide range of biological processes, such as hypertension and ovulation. Altered expression of this gene is implicated in tumorigenesis. Alternative splicing results in multiple transcript variants. [provided by RefSeq, Oct 2014]

**Protein Families:**

Druggable Genome, Secreted Protein

**Product images:**

15% SDS-PAGE (3ug)