

Product datasheet for **AR50825PU-N**

Endothelin-2 (25-178, His-tag) Human Protein

Product data:

Product Type:	Recombinant Proteins
Description:	Endothelin-2 (25-178, His-tag) human recombinant protein, 0.5 mg
Species:	Human
Expression Host:	E. coli
Expression cDNA Clone or AA Sequence:	MGSSHHHHHH SSGLVPRGSH MGSQAAATLE QPASSSHAQG THLRLRRCSC SSWLDKECVY FCHLDIIWVN TPEQTAPYGL GNPPRRRRRS LPRRCQCSSA RDPACATFCL RRPWTEAGAV PSRKSPADVF QTGKTGATTG ELLQRLDIS TVKSLFAKRQ QEAMREPRST HSRWRKR
Tag:	His-tag
Predicted MW:	19.9 kDa
Concentration:	lot specific
Purity:	>85% by SDS - PAGE
Buffer:	Presentation State: Purified State: Liquid purified protein Buffer System: 20 mM Tris-HCl buffer (pH 8.0) containing 0.4M urea, 10% glycerol
Preparation:	Liquid purified protein
Protein Description:	Recombinant human EDN2 protein, fused to His-tag at N-terminus, was expressed in E.coli.
Storage:	Store undiluted at 2-8°C for one week or (in aliquots) at -20°C to -80°C for longer. Avoid repeated freezing and thawing.
Stability:	Shelf life: one year from despatch.
RefSeq:	NP_001289198
Locus ID:	1907
UniProt ID:	P20800
Cytogenetics:	1p34.2
Synonyms:	ET-2; ET2; PPET2



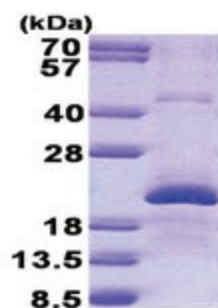
[View online »](#)

Summary:

This gene encodes a member of the endothelin protein family of secretory vasoconstrictive peptides. The preproprotein is processed to a short mature form which functions as a ligand for the endothelin receptors that initiate intracellular signaling events. This gene product is involved in a wide range of biological processes, such as hypertension and ovulation. Altered expression of this gene is implicated in tumorigenesis. Alternative splicing results in multiple transcript variants. [provided by RefSeq, Oct 2014]

Protein Families:

Druggable Genome, Secreted Protein

Product images:

15% SDS-PAGE (3ug)