

Product datasheet for **AR50823PU-N**

CHRAC1 (1-131, His-tag) Human Protein

Product data:

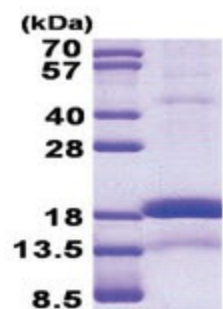
Product Type:	Recombinant Proteins
Description:	CHRAC1 (1-131, His-tag) human recombinant protein, 0.5 mg
Species:	Human
Expression Host:	E. coli
Expression cDNA Clone or AA Sequence:	MGSSHHHHHH SSGLVPRGSH MGSMADVVG KDKGGEQRLI SLPLSRIRVI MKSSPEVSSI NQEALVLTAK ATELFVQCLA TYSYRHGSGK EKKVLTYS DL ANTAQQSETF QFLADILPKK ILASKYLKML KEEKREEDEE NDNDNESDHD EADS
Tag:	His-tag
Predicted MW:	17.1 kDa
Concentration:	lot specific
Purity:	>90% by SDS - PAGE
Buffer:	Presentation State: Purified State: Liquid purified protein Buffer System: 20 mM Tris-HCl buffer (pH 8.0) containing 0.4M urea, 10% glycerol
Preparation:	Liquid purified protein
Protein Description:	Recombinant human CHRAC1 protein, fused to His-tag at N-terminus, was expressed in E.coli.
Storage:	Store undiluted at 2-8°C for one week or (in aliquots) at -20°C to -80°C for longer. Avoid repeated freezing and thawing.
Stability:	Shelf life: one year from despatch.
RefSeq:	NP_059140
Locus ID:	54108
UniProt ID:	Q9NRG0
Cytogenetics:	8q24.3
Synonyms:	CHARC1; CHARC15; CHRAC-1; CHRAC-15; CHRAC15; YCL1



[View online »](#)

Summary:

CHRAC1 is a histone-fold protein that interacts with other histone-fold proteins to bind DNA in a sequence-independent manner. These histone-fold protein dimers combine within larger enzymatic complexes for DNA transcription, replication, and packaging.[supplied by OMIM, Apr 2004]

Product images:

15% SDS-PAGE (3ug)