

Product datasheet for **AR50798PU-N**

PHOSPHO1 (1-267, His-tag) Human Protein

Product data:

Product Type:	Recombinant Proteins
Description:	PHOSPHO1 (1-267, His-tag) human recombinant protein, 0.5 mg
Species:	Human
Expression Host:	E. coli
Expression cDNA Clone or AA Sequence:	MGSSHHHHHH SSGLVPRGSH MGSMSGCFP VSGLRCLSRD GRMAAQGAPR FLLTFDFDET IVDENSDDSI VRAAPGQRLP ESLRATYREG FYNEYMQRVF KYLGEQGVVP RDLSAIYEAI PLSPGMSDLL QFVAKQGACF EVILISDANT FGVESLRAA GHHSLFRRIL SNPSGPDARG LLALRPFHTH SCARCPANMC KHKVLSDYLR ERAHDGVHFE RLFYVGDGAN DFCPMGLLAG GDVAFPRRGY PMHRLIQEAQ KAEPSSFRAS WPWETAADV RLHLQQLKS C
Tag:	His-tag
Predicted MW:	32.2 kDa
Concentration:	lot specific
Purity:	>95% by SDS - PAGE
Buffer:	Presentation State: Purified State: Liquid purified protein Buffer System: Phosphate buffered Saline pH 7.4 containing 50% glycerol
Preparation:	Liquid purified protein
Protein Description:	Recombinant human PHOSPHO1 protein, fused to His-tag at N-terminus, was expressed in E.coli and purified by using conventional chromatography techniques.
Storage:	Store undiluted at 2-8°C for one week or (in aliquots) at -20°C to -80°C for longer. Avoid repeated freezing and thawing.
Stability:	Shelf life: one year from despatch.
RefSeq:	NP_001137276
Locus ID:	162466
UniProt ID:	Q8TCT1
Cytogenetics:	17q21.32



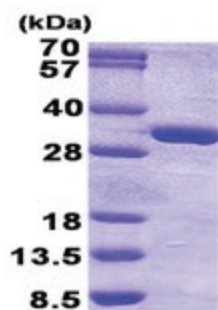
[View online »](#)

Summary: Phosphatase that has a high activity toward phosphoethanolamine (PEA) and phosphocholine (PCho). Involved in the generation of inorganic phosphate for bone mineralization.[UniProtKB/Swiss-Prot Function]

Protein Families: Druggable Genome

Protein Pathways: Glycerophospholipid metabolism

Product images:



15% SDS-PAGE (3ug)