

Product datasheet for **AR50787PU-N**

RAB10 (1-200, His-tag) Human Protein

Product data:

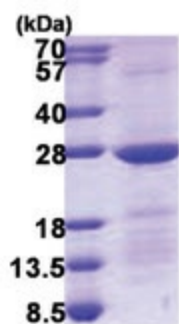
Product Type:	Recombinant Proteins
Description:	RAB10 (1-200, His-tag) human recombinant protein, 0.25 mg
Species:	Human
Expression Host:	E. coli
Expression cDNA Clone or AA Sequence:	MGSSHHHHHH SSGLVPRGSH MAKKTYDLLF KLLIGDSGV GKTCVLFRRS DDAFNNTTFFIS TIGIDFKIKT VELQGKKIKL QIWDTAGQER FHTITTSYR GAMGIMLVYD ITNGKSFENI SKWLRNIDEH ANEDVERMLL GNKCDMDDKR VVPKKGKEQI AREHGIRFFE TSAKANINIE KAFLTLAEDI LRKTPVKEPN SENVDISSGG GVTGWKSKCC
Tag:	His-tag
Predicted MW:	24.7 kDa
Concentration:	lot specific
Purity:	85 %
Buffer:	Presentation State: Purified State: Liquid purified protein Buffer System: 20 mM Tris-HCl buffer (pH 8.0) containing 10% glycerol 0.4M Urea
Preparation:	Liquid purified protein
Protein Description:	Recombinant human RAB10 protein, fused to His-tag at N-terminus, was expressed in E.coli.
Storage:	Store undiluted at 2-8°C for one week or (in aliquots) at -20°C to -80°C for longer. Avoid repeated freezing and thawing.
Stability:	Shelf life: one year from despatch.
RefSeq:	NP_057215
Locus ID:	10890
UniProt ID:	P61026
Cytogenetics:	2p23.3
Summary:	RAB10 belongs to the RAS (see HRAS; MIM 190020) superfamily of small GTPases. RAB proteins localize to exocytic and endocytic compartments and regulate intracellular vesicle trafficking (Bao et al., 1998 [PubMed 9918381]).[supplied by OMIM, Mar 2009]



[View online »](#)

Protein Families: Druggable Genome

Product images:



15% SDS-PAGE (3ug)