

Product datasheet for **AR50778PU-N**

CD226 / DNAM1 (19-254, His-tag) Human Protein

Product data:

Product Type:	Recombinant Proteins
Description:	CD226 / DNAM1 (19-254, His-tag) human recombinant protein, 0.5 mg
Species:	Human
Expression Host:	E. coli
Expression cDNA Clone or AA Sequence:	MGSSHHHHHH SSGLVPRGSH MGSEEVLWHT SVPFAENMSL ECVYPSMGIL TQVEWFKIGT QQDSIAIFSP THGMVIRKPY AERVYFLNST MASNNMTLFF RNASEDDVGY YSCSLYTPQ GTWQKVIQVV QSDSFEAAVP SNSHIVSEPG KNVTLTCQPQ MTWPVQAVRW EKIQPRQIDL LTYCNLVHGR NFTSKFPRQI VSNCSHGRWS VIVIPDVTVS DSGLYRCYLQ ASAGENETFV MRLTVAEGKT DNQYTLFVA
Tag:	His-tag
Predicted MW:	29.4 kDa
Concentration:	lot specific
Purity:	>90% by SDS - PAGE
Buffer:	Presentation State: Purified State: Liquid purified protein Buffer System: 20 mM Tris-HCl buffer (pH 8.0) containing 0.4M UREA, 10% glycerol
Preparation:	Liquid purified protein
Protein Description:	Recombinant human CD226 protein, fused to His-tag at N-terminus, was expressed in E.coli.
Storage:	Store undiluted at 2-8°C for one week or (in aliquots) at -20°C to -80°C for longer. Avoid repeated freezing and thawing.
Stability:	Shelf life: one year from despatch.
RefSeq:	NP_001290547
Locus ID:	10666
UniProt ID:	Q15762
Cytogenetics:	18q22.2
Synonyms:	DNAM-1; DNAM1; PTA1; TLISA1



[View online »](#)

Summary:

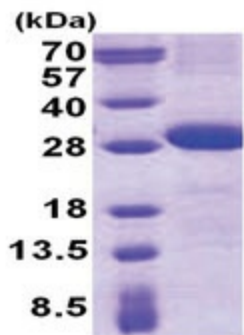
This gene encodes a glycoprotein expressed on the surface of NK cells, platelets, monocytes and a subset of T cells. It is a member of the Ig-superfamily containing 2 Ig-like domains of the V-set. The protein mediates cellular adhesion of platelets and megakaryocytic cells to vascular endothelial cells. The protein also plays a role in megakaryocytic cell maturation. Alternative splicing results in multiple transcript variants. [provided by RefSeq, Jan 2015]

Protein Families:

Druggable Genome, Transmembrane

Protein Pathways:

Cell adhesion molecules (CAMs)

Product images:

15% SDS-PAGE (3ug)