

## Product datasheet for **AR50753PU-N**

### **BUB3 (1-328, His-tag) Human Protein**

#### **Product data:**

<b>Product Type:</b>	Recombinant Proteins
<b>Description:</b>	BUB3 (1-328, His-tag) human recombinant protein, 0.5 mg
<b>Species:</b>	Human
<b>Expression Host:</b>	E. coli
<b>Expression cDNA Clone or AA Sequence:</b>	MGSSHHHHHH SSGLVPRGSH MGSMTGSNEF KLNQPPEDGI SSVKFSPTS QLLVSSWDT SVRLYDVPAN SMRLKYQHTG AVLDCAFYDP THAWSGGLDH QMKMHDLNTD QENLVGTHDA PIRCVEYCPE VNVMVTGSWD QTVKLWDPRT PCNAGTFSQP EKVYTLVSG DRLIVGTAGR RVLVWDLRNM GYVQQRRESS LKYQTRCIRA FPNKQGYVLS SIEGRVAVEY LDPSPEVQKK KYAFKCHRLK ENNIEQIYPV NAISFHNIHN TFATGGSDGF VNIWDPFNKK RLCQFHRYPT SIASLAFSND GTTLAIASSY MYEMDDTEHP EDGIFIRQVT DAETKPKSPC T
<b>Tag:</b>	His-tag
<b>Predicted MW:</b>	39.5 kDa
<b>Concentration:</b>	lot specific
<b>Purity:</b>	>85% by SDS - PAGE
<b>Buffer:</b>	Presentation State: This purified protein is available in a denatured form, making it less suitable for functional studies. Denatured proteins are better suited for applications like Western Blot (WB) or imaging assays. State: Liquid purified protein Buffer System: 20 mM Tris-HCl buffer (pH 8.0) containing 0.4M Urea, 10% glycerol
<b>Preparation:</b>	Liquid purified protein
<b>Protein Description:</b>	Recombinant human BUB3 protein, fused to His-tag at N-terminus, was expressed in E.coli.
<b>Storage:</b>	Store undiluted at 2-8°C for one week or (in aliquots) at -20°C to -80°C for longer. Avoid repeated freezing and thawing.
<b>Stability:</b>	Shelf life: one year from despatch.
<b>RefSeq:</b>	<a href="#">NP_001007794</a>
<b>Locus ID:</b>	9184
<b>UniProt ID:</b>	<a href="#">O43684</a>
<b>Cytogenetics:</b>	10q26.13



[View online »](#)

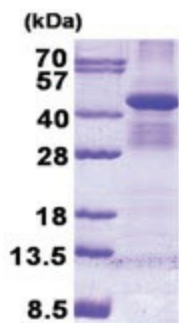
**Synonyms:** BUB3L; hBUB3

**Summary:** This gene encodes a protein involved in spindle checkpoint function. The encoded protein contains four WD repeat domains and has sequence similarity with the yeast BUB3 protein. Alternate transcriptional splice variants, encoding different isoforms, have been characterized. [provided by RefSeq, Jul 2008]

**Protein Families:** Druggable Genome

**Protein Pathways:** Cell cycle

**Product images:**



15% SDS-PAGE (3ug)