

Product datasheet for **AR50750PU-S**

CAB39L (1-337, His-tag) Human Protein

Product data:

Product Type:	Recombinant Proteins
Description:	CAB39L (1-337, His-tag) human recombinant protein, 0.1 mg
Species:	Human
Expression Host:	E. coli
Expression cDNA Clone or AA Sequence:	MGSSHHHHHH SSGLVPRGSH MGSMKKMPLF SKSHKNPAEI VKILKDNLAI LEKQDKKTDK ASEEVSKSLQ AMKEILCGTN EKEPTEAVA QLAQELYSSG LLVTLIADLQ LIDFEGKKDV TQIFNNILRR QIGTRSPTVE YISAHPHILF MLLKGYEAPQ IALRCGIMLR ECIRHEPLAK IILFSNQFRD FFKYVELSTF DIASDAFATF KDLLTRHKVL VADFLEQNYD TIFEDYEKLL QSENYVTKRQ SLKLLGELIL DRHNFAIMTK YISKPENLKL MMNLLRDKSP NIQFEAFHVF KVFVASPHKT QPIVEILLKN QPKLIEFLSS FQKERTDDEQ FADEKNYLIK QIRDLKKTAP
Tag:	His-tag
Predicted MW:	41.5 kDa
Concentration:	lot specific
Purity:	>95% by SDS - PAGE
Buffer:	Presentation State: Purified State: Liquid purified protein Buffer System: 20 mM Tris-HCl buffer (pH 8.0) containing 0.1M NaCl, 10% glycerol, 1 mM DTT
Preparation:	Liquid purified protein
Protein Description:	Recombinant human CAB39L protein, fused to His-tag at N-terminus, was expressed in E.coli and purified by using conventional chromatography techniques.
Storage:	Store undiluted at 2-8°C for one week or (in aliquots) at -20°C to -80°C for longer. Avoid repeated freezing and thawing.
Stability:	Shelf life: one year from despatch.
RefSeq:	NP_001073138
Locus ID:	81617
UniProt ID:	Q9H9S4 , A0A024RDT3
Cytogenetics:	13q14.2
Synonyms:	bA103J18.3; MO2L; MO25-BETA

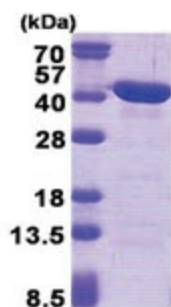


[View online »](#)

Summary: Component of a complex that binds and activates STK11/LKB1. In the complex, required to stabilize the interaction between CAB39/MO25 (CAB39/MO25alpha or CAB39L/MO25beta) and STK11/LKB1 (By similarity).[UniProtKB/Swiss-Prot Function]

Protein Pathways: mTOR signaling pathway

Product images:



15% SDS-PAGE (3ug)