

## Product datasheet for **AR50742PU-N**

### LYN (1-512, His-tag) Human Protein

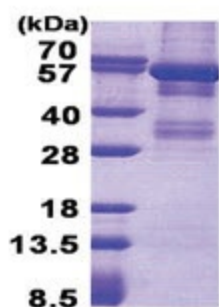
#### Product data:

Product Type:	Recombinant Proteins
Description:	LYN (1-512, His-tag) human recombinant protein, 0.5 mg
Species:	Human
Expression Host:	E. coli
Expression cDNA Clone or AA Sequence:	MGSSHHHHHH SSSLVPRGSH MGSMGCIKSK GKDSLSDDG V DLKTQPVRNT ERTIYVRDPT SNKQQRVPE SLLPGQRFQ TKDPEEQDI VVALYPYDGI HPDDL SFKKG EKMKVLEEHG EWWKAKSLLT KKEGFIPSNY VAKLNTLETE EWWFKDITRK DAERQLLAPG NSAGAFLIRE SETLKGFSLS SVRDFDPVHG DVIKHYKIRS LDNGGGYISP RITFPCISDM IKHYQKQADG LCRRLEKACI SPKPQKPWDK DAWEIPRESI KLVKRLGAGQ FGEVWMGYYN NSTKVAVKTL KPGTMSVQAF LEEANLMKTL QHDKLVRLYA VVTREEPIYI ITEYMAKGS L LDFLKSDEGG KVLLPKLIDF SAQIAEGMAY IERKNYIHRD LRAANVLVSE SLMCKIADFG LARVIEDNEY TAREGAKFPI KWTAPEAINF GCFTIKSDVW SFGILLYEIV TYGKIPYPGR TNADVMTALS QGYRMPRVEN CPDELYDIMK MCWKEKAEER PTFDYLQSVL DDFYTATEGQ YQQQP
Tag:	His-tag
Predicted MW:	61.0 kDa
Concentration:	lot specific
Purity:	>90% by SDS - PAGE
Buffer:	Presentation State: Purified State: Liquid purified protein Buffer System: 20 mM Tris-HCl buffer (pH 8.0) containing 0.4M urea, 10% glycerol
Preparation:	Liquid purified protein
Protein Description:	Recombinant human LYN protein, fused to His-tag at N-terminus, was expressed in E.coli.
Storage:	Store undiluted at 2-8°C for one week or (in aliquots) at -20°C to -80°C for longer. Avoid repeated freezing and thawing.
Stability:	Shelf life: one year from despatch.
RefSeq:	<a href="#">NP_001104567</a>
Locus ID:	4067
UniProt ID:	<a href="#">P07948</a> , <a href="#">Q6NUK7</a> , <a href="#">P07948-2</a>



[View online »](#)

<b>Cytogenetics:</b>	8q12.1
<b>Synonyms:</b>	JTK8; p53Lyn; p56Lyn
<b>Summary:</b>	This gene encodes a tyrosine protein kinase, which maybe involved in the regulation of mast cell degranulation, and erythroid differentiation. Alternatively spliced transcript variants encoding different isoforms have been found for this gene. [provided by RefSeq, Jul 2011]
<b>Protein Families:</b>	Druggable Genome, Protein Kinase
<b>Protein Pathways:</b>	B cell receptor signaling pathway, Chemokine signaling pathway, Epithelial cell signaling in Helicobacter pylori infection, Fc epsilon RI signaling pathway, Fc gamma R-mediated phagocytosis, Long-term depression

**Product images:**

15% SDS-PAGE (3ug)