

Product datasheet for **AR50740PU-S**

CD300C / CMRF35A1 (21-183, His-tag) Human Protein

Product data:

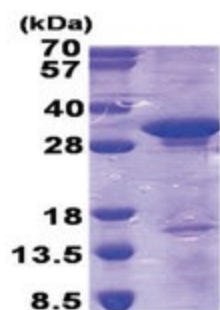
Product Type:	Recombinant Proteins
Description:	CD300C / CMRF35A1 (21-183, His-tag) human recombinant protein, 0.1 mg
Species:	Human
Expression Host:	E. coli
Expression cDNA Clone or AA Sequence:	MGSSHHHHHH SSGLVPRGSH MGSYFPLSH PMTVAGPVGG SLSVQCRYEK EHRTLNKFWC RPPQILRC DK IVETKGSAGK RNGRVSIRDS PANLSFTVTL ENLTEEDAGT YWCGVDTPWL RDFHDPIVEV EVSVFPAGTT TASSPQSSMG TSGPPTKLPV HTWPSVTRKD SPEPSHPGGS LFSNVR
Tag:	His-tag
Predicted MW:	20.2 kDa
Concentration:	lot specific
Purity:	>85% by SDS - PAGE
Buffer:	Presentation State: Purified State: Liquid purified protein Buffer System: 20 mM Tris-HCl buffer (pH 8.0) containing 0.4M urea, 10% glycerol
Preparation:	Liquid purified protein
Protein Description:	Recombinant human CD300C protein, fused to His-tag at N-terminus, was expressed in E.coli.
Storage:	Store undiluted at 2-8°C for one week or (in aliquots) at -20°C to -80°C for longer. Avoid repeated freezing and thawing.
Stability:	Shelf life: one year from despatch.
RefSeq:	NP_006669
Locus ID:	10871
UniProt ID:	Q08708
Cytogenetics:	17q25.1
Synonyms:	CLM-6; CMRF-35; CMRF-35A; CMRF35; CMRF35-A1; CMRF35A; CMRF35A1; IGSF16; LIR
Summary:	The CMRF35 antigen, which was identified by reactivity with a monoclonal antibody, is present on monocytes, neutrophils, and some T and B lymphocytes (Jackson et al., 1992 [PubMed 1349532]).[supplied by OMIM, Mar 2008]



[View online »](#)

Protein Families: Druggable Genome, Transmembrane

Product images:



15% SDS-PAGE (3ug)