

Product datasheet for **AR50717PU-S**

KCTD15 (1-234, His-tag) Human Protein

Product data:

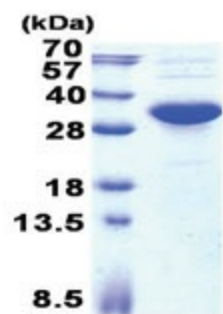
Product Type:	Recombinant Proteins
Description:	KCTD15 (1-234, His-tag) human recombinant protein, 0.1 mg
Species:	Human
Expression Host:	E. coli
Expression cDNA Clone or AA Sequence:	MGSSHHHHHH SSGLVPRGSH MPHRKERPSG SSLHTHGSTG TAEGGNMSRL SLTRSPVSPL AAQGIPLPAQ LTKSNAPVHI DVGSHMYTSS LATLTKYPDS RISRLFNGTE PIVLDSLKQH YFIDRDGEIF RYVLSFLRTS KLLLPDDFKD FSLLYEEARY YQLQPMVREL ERWQQEQEQR RRSRACDCLV VRVTPDLGER IALSGEKALI EEVFPETGDV MCNSVNAGWN QDPTHVIRFP LNGYCRLNSV QDVL
Tag:	His-tag
Predicted MW:	28.6 kDa
Concentration:	lot specific
Purity:	>90% by SDS - PAGE
Buffer:	Presentation State: Purified State: Liquid purified protein Buffer System: 20 mM Tris-HCl buffer (pH 8.0) containing 0.4M urea, 10% glycerol
Preparation:	Liquid purified protein
Protein Description:	Recombinant human KCTD15 protein, fused to His-tag at N-terminus, was expressed in E.coli.
Storage:	Store undiluted at 2-8°C for one week or (in aliquots) at -20°C to -80°C for longer. Avoid repeated freezing and thawing.
Stability:	Shelf life: one year from despatch.
RefSeq:	NP_001123466
Locus ID:	79047
UniProt ID:	Q96S11
Cytogenetics:	19q13.11
Summary:	During embryonic development, interferes with neural crest formation (By similarity). Inhibits AP2 transcriptional activity by interaction with its activation domain.[UniProtKB/Swiss-Prot Function]



[View online »](#)

Protein Families: Ion Channels: Other

Product images:



15% SDS-PAGE (3ug)