

## Product datasheet for **AR50698PU-N**

### CD322 / JAM2 (21-238, His-tag) Human Protein

#### Product data:

Product Type:	Recombinant Proteins
Description:	CD322 / JAM2 (21-238, His-tag) human protein, 0.5 mg
Species:	Human
Expression Host:	E. coli
Expression cDNA Clone or AA Sequence:	MGSSHHHHHH SSGLVPRGSH MGSLGYHKAY GFSAPKDQQV VTAVEYQEAI LACKTPKKTV SSRLEWKKLG RSVSFVYYQQ TLQGDFKNRA EMIDFNIRIK NVTRSDAGKY RCEVSAPSEQ GQNLEEDTVT LEVLVAPAVP SCEVPSSALS GTVVELRCQD KEGNPAPEYT WFKDGIRLLE NPRLGSQSTN SSYMNTKTG TLQFNTVSKL DTGEYSCEAR NSVGYRRCPG KRMQVDDLNI S
Tag:	His-tag
Predicted MW:	26.7 kDa
Concentration:	lot specific
Purity:	>90% by SDS - PAGE
Buffer:	Presentation State: Purified State: Liquid purified protein Buffer System: 20 mM Tris-HCl buffer (pH 8.0) containing 0.4M urea, 10% glycerol
Preparation:	Liquid purified protein
Storage:	Store undiluted at 2-8°C for one week or (in aliquots) at -20°C to -80°C for longer. Avoid repeated freezing and thawing.
Stability:	Shelf life: one year from despatch.
RefSeq:	<a href="#">NP_001257337</a>
Locus ID:	58494
UniProt ID:	<a href="#">P57087</a>
Cytogenetics:	21q21.3
Synonyms:	C21orf43; CD322; IBGC8; JAM-B; JAMB; PRO245; VE-JAM; VEJAM



[View online »](#)

**Summary:**

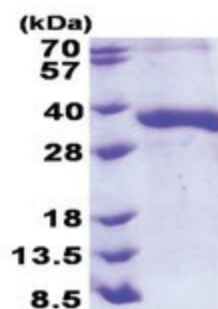
This gene belongs to the immunoglobulin superfamily, and the junctional adhesion molecule (JAM) family. The protein encoded by this gene is a type I membrane protein that is localized at the tight junctions of both epithelial and endothelial cells. It acts as an adhesive ligand for interacting with a variety of immune cell types, and may play a role in lymphocyte homing to secondary lymphoid organs. Alternatively spliced transcript variants have been found for this gene. [provided by RefSeq, Jul 2012]

**Protein Families:**

Druggable Genome, Transmembrane

**Protein Pathways:**

Cell adhesion molecules (CAMs), Epithelial cell signaling in Helicobacter pylori infection, Leukocyte transendothelial migration, Tight junction

**Product images:**

15% SDS-PAGE (3ug)