

Product datasheet for **AR50687PU-S**

Relaxin 2 / RLN2 (25-185, His-tag) Human Protein

Product data:

Product Type:	Recombinant Proteins
Description:	Relaxin 2 / RLN2 (25-185, His-tag) human recombinant protein, 0.1 mg
Species:	Human
Expression Host:	E. coli
Expression cDNA Clone or AA Sequence:	MGSSHHHHHH SSGLVPRGSH MGSDSWMEEV IKLCGRELVR AQIAICGMST WSKRSLSQED APQTPRPVAE IVPSFINKDT ETINMMSEFV ANLPQELKLT LSEMQPALPQ LQQHVPVLKD SLLFEFFKK LIRNRQSEAA DSSPSELKYL GLDTHSRKKR QLYSALANKC CHVGCTKRSL ARFC
Tag:	His-tag
Predicted MW:	20.7 kDa
Concentration:	lot specific
Purity:	>85% by SDS - PAGE
Buffer:	Presentation State: This purified protein is available in a denatured form, making it less suitable for functional studies. Denatured proteins are better suited for applications like Western Blot (WB) or imaging assays. State: Liquid purified protein Buffer System: 20 mM Tris-HCl buffer (pH 8.0) containing 0.4M Urea, 10% glycerol
Preparation:	Liquid purified protein
Protein Description:	Recombinant human RLN2 protein, fused to His-tag at N-terminus, was expressed in E.coli.
Storage:	Store undiluted at 2-8°C for one week or (in aliquots) at -20°C to -80°C for longer. Avoid repeated freezing and thawing.
Stability:	Shelf life: one year from despatch.
RefSeq:	NP_001316120
Locus ID:	6019
Cytogenetics:	9p24.1
Synonyms:	Relaxin H2, Prorelaxin H2, Pro-Relaxin 2, RLXH2, Relaxin A chain, Relaxin B chain



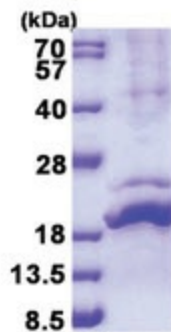
[View online »](#)

Summary:

This gene encodes a member of the relaxin subfamily and insulin superfamily of peptide hormones. In humans there are three non-allelic relaxin genes. This gene encodes multiple protein isoforms, at least one of which undergoes proteolytic processing. This processing generates relaxin A and B chains that are linked by disulfide bonds to form the mature peptide hormone. This hormone plays a role in the male and female reproductive systems and was initially noted for its role in pregnancy. This protein also plays broader roles in the cardiovascular system, including in the regulation of blood pressure and control of heart rate, and data from animal models shows that this protein may have anti-fibrotic and cardioprotective effects. [provided by RefSeq, Jul 2016]

Protein Families:

Secreted Protein

Product images:

15% SDS-PAGE (3ug)