

Product datasheet for **AR50673PU-N**

Glycolipid transfer protein / GLTP (1-209, His-tag) Human Protein

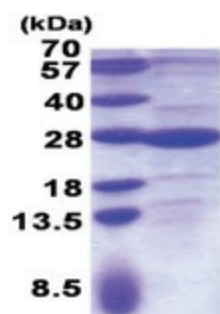
Product data:

Product Type:	Recombinant Proteins
Description:	Glycolipid transfer protein / GLTP (1-209, His-tag) human recombinant protein, 0.25 mg
Species:	Human
Expression Host:	E. coli
Expression cDNA Clone or AA Sequence:	MGSSHHHHHH SSGLVPRGSH MGSMALLAEH LLKPLPADKQ IETGPFLEAV SHLPPFFDCI GSPVFTPIKA DISGNITKIK AVYDTNPAKF RTLQNILEVE KEMYGAEWPK VGATLALMWL KRGLRFIQVF LQSIDGERD ENHPNLRVN ATKAYEMALK KYHGWIVQKI FQAALYAAPY KSDFLKALSK GQNVTEEECL EKIRLFLVNY TATIDVIYEM YTQMNAELNY KV
Tag:	His-tag
Predicted MW:	26.2 kDa
Concentration:	lot specific
Purity:	>85% by SDS - PAGE
Buffer:	Presentation State: Purified State: Liquid purified protein Buffer System: 20 mM Tris-HCl buffer (pH 8.0) containing 0.2M NaCl, 20% glycerol, 1 mM DTT
Preparation:	Liquid purified protein
Protein Description:	Recombinant human GLTP protein, fused to His-tag at N-terminus, was expressed in E.coli and purified by using conventional chromatography techniques.
Storage:	Store undiluted at 2-8°C for one week or (in aliquots) at -20°C to -80°C for longer. Avoid repeated freezing and thawing.
Stability:	Shelf life: one year from despatch.
RefSeq:	NP_057517
Locus ID:	51228
UniProt ID:	Q9NZD2 , A0A024RB17
Cytogenetics:	12q24.11
Summary:	The protein encoded by this gene is similar to bovine and porcine proteins which accelerate transfer of certain glycosphingolipids and glyceroglycolipids between membranes. It is thought to be a cytoplasmic protein. [provided by RefSeq, Jul 2008]



[View online »](#)

Product images:



15% SDS-PAGE (3ug)