

Product datasheet for **AR50665PU-N**

CHMP1A (1-196, His-tag) Human Protein

Product data:

Product Type:	Recombinant Proteins
Description:	CHMP1A (1-196, His-tag) human recombinant protein, 0.1 mg
Species:	Human
Expression Host:	E. coli
Expression cDNA Clone or AA Sequence:	MGSSHHHHHH SSGLVPRGSH MGSMDDTLFQ LKFTAKQLEK LAKKAEKDSK AEQAKVKKAL LQKNVECARV YAENAIRKKN EGVNWLRLMAS RVDVASKVQ TAVTMKGVTK NMAQVTKALD KALSTMDLQK VSSVMDFEQ QVQNLDVHTS VMEDSMSSAT TLTPPEQVD SLIMQIAEEN GLEVLQLSQ LPEGASAVGE SSVRSQEDQL SRRLAALRN
Tag:	His-tag
Predicted MW:	24.1 kDa
Concentration:	lot specific
Purity:	>85% by SDS - PAGE
Buffer:	Presentation State: Purified State: Liquid purified protein Buffer System: 20 mM Tris-HCl buffer (pH 8.0) containing 0.1M NaCl, 20% glycerol, 1 mM DTT
Preparation:	Liquid purified protein
Protein Description:	Recombinant human CHMP1A protein, fused to His-tag at N-terminus, was expressed in E.coli and purified by using conventional chromatography techniques.
Storage:	Store undiluted at 2-8°C for one week or (in aliquots) at -20°C to -80°C for longer. Avoid repeated freezing and thawing.
Stability:	Shelf life: one year from despatch.
RefSeq:	NP_001076783
Locus ID:	5119
Cytogenetics:	16q24.3
Synonyms:	CHMP1; PCH8; PCOLN3; PRSM1; VPS46-1; VPS46A



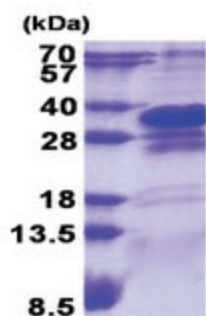
[View online »](#)

Summary:

This gene encodes a member of the CHMP/Chmp family of proteins which are involved in multivesicular body sorting of proteins to the interiors of lysosomes. The initial prediction of the protein sequence encoded by this gene suggested that the encoded protein was a metalloproteinase. The nomenclature has been updated recently to reflect the correct biological function of this encoded protein. Several transcripts encoding different isoforms have been found for this gene. [provided by RefSeq, Dec 2012]

Protein Families:

Druggable Genome, Transcription Factors

Product images:

15% SDS-PAGE (3ug)