

Product datasheet for **AR50645PU-N**

SSR4 / TRAPD (24-144, His-tag) Human Protein

Product data:

Product Type:	Recombinant Proteins
Description:	SSR4 / TRAPD (24-144, His-tag) human recombinant protein, 0.5 mg
Species:	Human
Expression Host:	E. coli
Expression cDNA Clone or AA Sequence:	MGSSHHHHHH SSGLVPRGSH MGSEACLEPQ ITPSYTTSD AVISTETVFI VEISLTCKNR VQNMALYADV GGKQFPVTRG QDVGRYQVSW SLDHKSAHAG TYEVRFFDEE SYSLLRKAQR NNEDISIIPP LFTVSVDRHG TWNG
Tag:	His-tag
Predicted MW:	16.1 kDa
Concentration:	lot specific
Purity:	>90% by SDS - PAGE
Buffer:	Presentation State: This purified protein is available in a denatured form, making it less suitable for functional studies. Denatured proteins are better suited for applications like Western Blot (WB) or imaging assays. State: Liquid purified protein Buffer System: 20 mM Tris-HCl buffer (pH 8.0) containing 0.4M UREA, 10% glycerol
Preparation:	Liquid purified protein
Protein Description:	Recombinant human SSR4 protein, fused to His-tag at N-terminus, was expressed in E.coli.
Storage:	Store undiluted at 2-8°C for one week or (in aliquots) at -20°C to -80°C for longer. Avoid repeated freezing and thawing.
Stability:	Shelf life: one year from despatch.
RefSeq:	NP_001191455
Locus ID:	6748
UniProt ID:	P51571
Cytogenetics:	Xq28
Synonyms:	SSR-delta, TRAP-delta



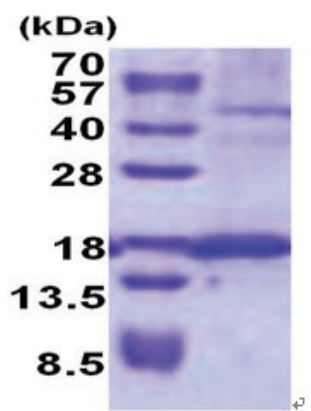
[View online »](#)

Summary:

This gene encodes the delta subunit of the translocon-associated protein complex which is involved in translocating proteins across the endoplasmic reticulum membrane. The encoded protein is located in the Xq28 region and is arranged in a compact head-to-head manner with the isocitrate dehydrogenase 3 (NAD+) gamma gene and both genes are driven by a CpG-embedded bidirectional promoter. Alternate splicing results in multiple transcript variants. [provided by RefSeq, Mar 2011]

Protein Families:

Druggable Genome

Product images:

15% SDS-PAGE (3ug)