

Product datasheet for **AR50640PU-S**

Beclin-1 (1-450, His-tag) Human Protein

Product data:

Product Type:	Recombinant Proteins
Description:	Beclin-1 (1-450, His-tag) human recombinant protein, 20 µg
Species:	Human
Expression Host:	E. coli
Expression cDNA Clone or AA Sequence:	MGSSHHHHHH SSGLVPRGSH MEGSKTSNNS TMQVSFVCQR CSQPLKLDTS FKILDRVTIQ ELTAPLLTTA QAKPGETQEE ETNSGEEPFI ETPRQDGVSR RFIPPARMMS TESANSFTLI GEASDGGTME NLSRRLKVTG DLFDIMSGQT DVDHPLCEEC TDLLDQLDT QLNVTENECQ NYKRCLEILE QMNEDDSEQL QMELKELALE EERLIQELED VEKNRKIVAE NLEKVQAEAE RLDQEEAQYQ REYSEFKRQQ LELDDELKSV ENQMRYAQTQ LDKLKKTNVF NATFHIWHSG QFGTINNFRLL GRLPSVPVEW NEINAAWGQT VLLLHALANK MGLKFQRYRL VPGYGNHSYLE SLTDKSKELP LYCSGGLRFF WDNKFDHAMV AFLDCVQQFK EEVEKGETRF CLPYRMDVEK GKIEDTGGSG GSYSIKTQFN SEEQWTKALK FMLTNLKWGL AWWSSQFYNK
Tag:	His-tag
Predicted MW:	54.1 kDa
Concentration:	lot specific
Purity:	>85% by SDS - PAGE
Buffer:	Presentation State: Purified State: Liquid purified protein Buffer System: 20 mM Tris-HCl buffer (pH 8.5) containing 0.1M NaCl, 10% glycerol, 1 mM DTT
Preparation:	Liquid purified protein
Protein Description:	Recombinant human BECN1 protein, fused to His-tag at N-terminus, was expressed in E.coli and purified by conventional column chromatography, after refolding of the isolated inclusion bodies in a renaturation buffer.
Storage:	Store undiluted at 2-8°C for one week or (in aliquots) at -20°C to -80°C for longer. Avoid repeated freezing and thawing.
Stability:	Shelf life: one year from despatch.
RefSeq:	<u>NP_001300927</u>
Locus ID:	8678



[View online »](#)

UniProt ID: [Q14457](#), [A0A024R1X5](#)

Cytogenetics: 17q21.31

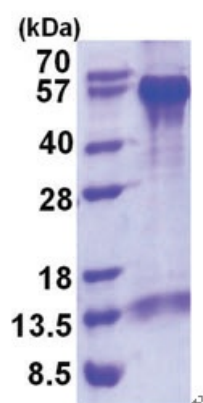
Synonyms: ATG6; beclin1; VPS30

Summary: This gene encodes a protein that regulates autophagy, a catabolic process of degradation induced by starvation. The encoded protein is a component of the phosphatidylinositol-3-kinase (PI3K) complex which mediates vesicle-trafficking processes. This protein is thought to play a role in multiple cellular processes, including tumorigenesis, neurodegeneration and apoptosis. Alternative splicing results in multiple transcript variants. [provided by RefSeq, Sep 2015]

Protein Families: Druggable Genome

Protein Pathways: Regulation of autophagy

Product images:



15% SDS-PAGE (3ug)