

Product datasheet for **AR50631PU-S**

GCET2 / GAL (1-178, His-tag) Human Protein

Product data:

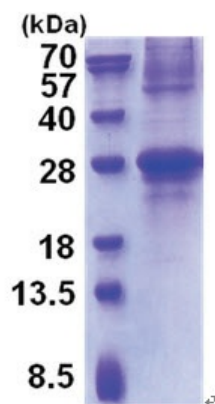
Product Type:	Recombinant Proteins
Description:	GCET2 / GAL (1-178, His-tag) human recombinant protein, 0.1 mg
Species:	Human
Expression Host:	E. coli
Expression cDNA Clone or AA Sequence:	MGSSHHHHHH SSGLVPRGSH MGSMGNSLLR ENRRQNTQE MPWNVRMQSP KQRTSRCWDH HIAEGCFCLP WKKILIFEKR QDSQNERM SSTPIQDNVD QTYSEELCYT LINHRVLCTR PSGNSAEEYY ENVPCKAERP RESLGGTETE YSLLHMPSTD PRHARPEDE YELLMPHRIS SHFLQQRPL MAPSETQFSH L
Tag:	His-tag
Predicted MW:	23 kDa
Concentration:	lot specific
Purity:	>85% by SDS - PAGE
Buffer:	Presentation State: Purified State: Liquid purified protein Buffer System: 20 mM Tris-HCl buffer (pH 8.0) containing 0.2M NaCl, 50% glycerol, 1 mM DTT
Preparation:	Liquid purified protein
Protein Description:	Recombinant human GCET2 protein, fused to His-tag at N-terminus, was expressed in E.coli and purified by using conventional chromatography techniques.
Storage:	Store undiluted at 2-8°C for one week or (in aliquots) at -20°C to -80°C for longer. Avoid repeated freezing and thawing.
Stability:	Shelf life: one year from despatch.
RefSeq:	NP_001177188
Locus ID:	257144
UniProt ID:	Q8N6F7
Cytogenetics:	3q13.2
Synonyms:	GCAT2; GCET2; HGAL



[View online »](#)

Summary:

This gene encodes a protein which may function in signal transduction pathways and whose expression is elevated in germinal cell lymphomas. It contains a putative PDZ-interacting domain, an immunoreceptor tyrosine-based activation motif (ITAM), and two putative SH2 binding sites. In B cells, its expression is specifically induced by interleukin-4. Alternative splicing results in multiple transcript variants encoding different isoforms. [provided by RefSeq, Jul 2008]

Product images:

15% SDS-PAGE (3ug)