

Product datasheet for **AR50628PU-S**

PSMD9 (1-223, His-tag) Human Protein

Product data:

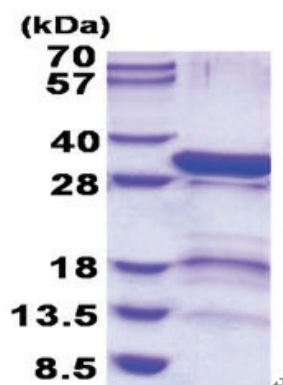
Product Type:	Recombinant Proteins
Description:	PSMD9 (1-223, His-tag) human recombinant protein, 0.1 mg
Species:	Human
Expression Host:	E. coli
Expression cDNA Clone or AA Sequence:	MGSSHHHHHH SSGLVPRGSH MGSMSDEEAR QSGGSSQAGV VTVSDVQELM RRKEEIEAQI KANYDVLESQ KGIGMNEPLV DCEGYPRSDV DLYQVRTARH NIICLQNDHK AVMKQVEEAL HQLHARDKEK QARDMAEAHK EAMSRKLGQS ESQGPPRAFA KVNSISPGSP ASIAGLQVDD EIVEFGSVNT QNFQSLHNIG SVVQHSEGKP LNVTVIRRGE KHQLRLVPTR WAGKGLLGCN IIPLQR
Tag:	His-tag
Predicted MW:	27.1 kDa
Concentration:	lot specific
Purity:	>90% by SDS - PAGE
Buffer:	Presentation State: Purified State: Liquid purified protein Buffer System: 20 mM Tris-HCl buffer (pH 8.0) containing 0.15M NaCl, 10% glycerol, 1 mM DTT
Preparation:	Liquid purified protein
Protein Description:	Recombinant human PSMD9 protein, fused to His-tag at N-terminus, was expressed in E.coli and purified by using conventional chromatography techniques.
Storage:	Store undiluted at 2-8°C for one week or (in aliquots) at -20°C to -80°C for longer. Avoid repeated freezing and thawing.
Stability:	Shelf life: one year from despatch.
RefSeq:	NP_001248329
Locus ID:	5715
UniProt ID:	O00233
Cytogenetics:	12q24.31
Synonyms:	p27; Rpn4



[View online »](#)

Summary:

The 26S proteasome is a multicatalytic proteinase complex with a highly ordered structure composed of 2 complexes, a 20S core and a 19S regulator. The 20S core is composed of 4 rings of 28 non-identical subunits; 2 rings are composed of 7 alpha subunits and 2 rings are composed of 7 beta subunits. The 19S regulator is composed of a base, which contains 6 ATPase subunits and 2 non-ATPase subunits, and a lid, which contains up to 10 non-ATPase subunits. Proteasomes are distributed throughout eukaryotic cells at a high concentration and cleave peptides in an ATP/ubiquitin-dependent process in a non-lysosomal pathway. An essential function of a modified proteasome, the immunoproteasome, is the processing of class I MHC peptides. This gene encodes a non-ATPase subunit of the 19S regulator. Three transcript variants encoding two different isoforms have been found for this gene. [provided by RefSeq, May 2012]

Product images:

15% SDS-PAGE (3ug)