

Product datasheet for **AR50625PU-S**

Endophilin-B1 (1-365, His-tag) Human Protein

Product data:

Product Type:	Recombinant Proteins
Description:	Endophilin-B1 (1-365, His-tag) human recombinant protein, 0.1 mg
Species:	Human
Expression Host:	E. coli
Expression cDNA Clone or AA Sequence:	MNIMDFNVKK LAADAGTFLS RAVQFTEEKL GQAEKTELDA HLENLLSKAE CTKIWTEKIM KQTEVLLQPN PNARIEEFVY EKLDRKAPSR INNPELLGQY MIDAGTEFGP GTAYGNALIK CGETQKRIGT ADRELIQ TSA LNFLTPLRNF IEGDYKTIK ERKLLQNKRL DLDAAKTRLK KAKAAETRNS SEQLRITQS EFDRQAEITR LLEGISSTH AHHLRCLNDF VEAQMTYYAQ CYQYMLDLQK QLGSPSNYL SNNNQTSVTP VPSVLPNAIG SSAMASTSGL VITSPSNLSD LKECSGSRKA RVLYDYDAAN STELSLLADE VITVFSVVG M DSDWLMGERG NQKGVKVPITY LLELLNLEHHH HHH
Tag:	His-tag
Predicted MW:	41.9 kDa
Concentration:	lot specific
Purity:	>90% by SDS - PAGE
Buffer:	Presentation State: Purified State: Liquid purified protein Buffer System: 20 mM Tris-HCl buffer (pH 8.0) containing 0.1M NaCl, 10% glycerol, 2 mM DTT
Preparation:	Liquid purified protein
Protein Description:	Recombinant human SH3GLB1 protein, fused to His-tag at C-terminus, was expressed in E.coli and purified by using conventional chromatography techniques.
Storage:	Store undiluted at 2-8°C for one week or (in aliquots) at -20°C to -80°C for longer. Avoid repeated freezing and thawing.
Stability:	Shelf life: one year from despatch.
RefSeq:	NP_001193580
Locus ID:	51100
UniProt ID:	Q9Y371 , A0A087WW40
Cytogenetics:	1p22.3
Synonyms:	Bif-1; CGI-61; dj612B15.2; PPP1R70



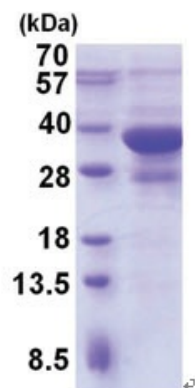
[View online »](#)

Summary:

This gene encodes a SRC homology 3 domain-containing protein. The encoded protein interacts with the proapoptotic member of the Bcl-2 family, Bcl-2-associated X protein (Bax) and may be involved in regulating apoptotic signaling pathways. This protein may also be involved in maintaining mitochondrial morphology. Alternate splicing results in multiple transcript variants. [provided by RefSeq, Sep 2011]

Protein Pathways:

Endocytosis

Product images:

15% SDS-PAGE (3ug)