

Product datasheet for **AR50617PU-S**

Scramblase 1 / PLSCR1 (1-288, His-tag) Human Protein

Product data:

Product Type:	Recombinant Proteins
Description:	Scramblase 1 / PLSCR1 (1-288, His-tag) human recombinant protein, 50 µg
Species:	Human
Expression Host:	E. coli
Expression cDNA Clone or AA Sequence:	MGSSHHHHHH SSGLVPRGSH MDKQNSQMNA SHPETNLPVG YPPQYPPTAF QGPPGYSGYP GPQVSYPPPP AGHSGPGPAG FPVPNQPVYN QPVYNQPVGA AGVPWMPAPQ PPLNCPGLE YLSQIDQILI HQQIELLEVL TGFETNNKYE IKNSFGQRVY FAAEDTDCCT RNCCGPSRPF TLRIIDNMGQ EVITLERPLR CSSCCPCCL QEIEIQAPPG VPIGYVIQIW HPCLPKFTIQ NEKREDVLKI SGPCVVCSCC GDVDFEIKSL DEQCVVGKIS KHWTGILREA FTDADNFGIQ FPLDLQVK
Tag:	His-tag
Predicted MW:	33.8 kDa
Concentration:	lot specific
Purity:	>90% by SDS - PAGE
Buffer:	Presentation State: Purified State: Liquid purified protein Buffer System: 20 mM Tris-HCl buffer (pH 8.0) containing 0.2M NaCl, 30% glycerol, 1 mM DTT
Preparation:	Liquid purified protein
Protein Description:	Recombinant human PLSCR1 protein, fused to His-tag at N-terminus, was expressed in E.coli and purified by using conventional chromatography techniques.
Storage:	Store undiluted at 2-8°C for one week or (in aliquots) at -20°C to -80°C for longer. Avoid repeated freezing and thawing.
Stability:	Shelf life: one year from despatch.
RefSeq:	NP_066928
Locus ID:	5359
UniProt ID:	O15162
Cytogenetics:	3q24
Synonyms:	MMTRA1B



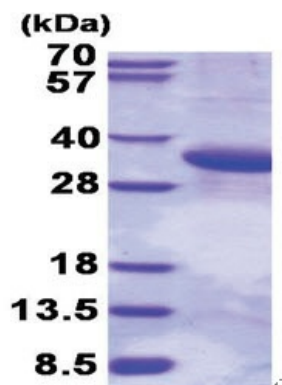
[View online »](#)

Summary:

May mediate accelerated ATP-independent bidirectional transbilayer migration of phospholipids upon binding calcium ions that results in a loss of phospholipid asymmetry in the plasma membrane. May play a central role in the initiation of fibrin clot formation, in the activation of mast cells and in the recognition of apoptotic and injured cells by the reticuloendothelial system.[UniProtKB/Swiss-Prot Function]

Protein Families:

Druggable Genome, Stem cell - Pluripotency

Product images:

15% SDS-PAGE (3ug)