

Product datasheet for **AR50615PU-N**

Skeletal muscle Troponin I (1-187, His-tag) Human Protein

Product data:

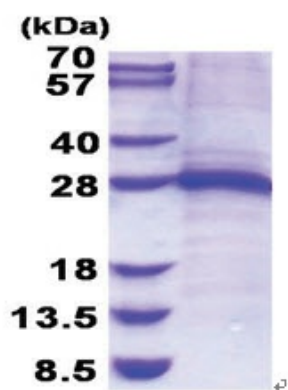
Product Type:	Recombinant Proteins
Description:	Skeletal muscle Troponin I (1-187, His-tag) human recombinant protein, 0.5 mg
Species:	Human
Expression Host:	E. coli
Expression cDNA Clone or AA Sequence:	MGSSHHHHHH SSGLVPRGSH MPEVERKPKI TASRKLLLKS LMLAKAKECW EQEHEEREAE KVRylaERIP TLQTRGLSLs ALQDLCRELH AKVEVvDEER YDIEAKCLHN TREIKDLKk VMDLRGKfKR PPLRRVRVSA DAMLRALLGS KHKVSMdLRA NLKSVKkEDT EKERPVEVGd WRKNVEAMsG MEGRKKMfDA AKSPTSQ
Tag:	His-tag
Predicted MW:	23.8 kDa
Concentration:	lot specific
Purity:	>90% by SDS - PAGE
Buffer:	Presentation State: Purified State: Liquid purified protein Buffer System: 20 mM Tris-HCl buffer (pH 8.0) containing 0.4M urea, 10% glycerol
Preparation:	Liquid purified protein
Protein Description:	Recombinant human TNNI1 protein, fused to His-tag at N-terminus, was expressed in E.coli.
Storage:	Store undiluted at 2-8°C for one week or (in aliquots) at -20°C to -80°C for longer. Avoid repeated freezing and thawing.
Stability:	Shelf life: one year from despatch.
RefSeq:	NP_003272
Locus ID:	7135
UniProt ID:	P19237
Cytogenetics:	1q32.1
Synonyms:	SSTNI; TNN1



[View online »](#)

Summary:

Troponin proteins associate with tropomyosin and regulate the calcium sensitivity of the myofibril contractile apparatus of striated muscles. Troponin I (TnI), along with troponin T (TnT) and troponin C (TnC), is one of 3 subunits that form the troponin complex of the thin filaments of striated muscle. TnI is the inhibitory subunit; blocking actin-myosin interactions and thereby mediating striated muscle relaxation. The TnI subfamily contains three genes: TnI-skeletal-fast-twitch, TnI-skeletal-slow-twitch, and TnI-cardiac. The TnI-fast and TnI-slow genes are expressed in fast-twitch and slow-twitch skeletal muscle fibers, respectively, while the TnI-cardiac gene is expressed exclusively in cardiac muscle tissue. This gene encodes the Troponin-I-skeletal-slow-twitch protein. This gene is expressed in cardiac and skeletal muscle during early development but is restricted to slow-twitch skeletal muscle fibers in adults. The encoded protein prevents muscle contraction by inhibiting calcium-mediated conformational changes in actin-myosin complexes. [provided by RefSeq, Jul 2008]

Product images:

15% SDS-PAGE (3ug)