

Product datasheet for **AR50533PU-S**

SEC22B (14-194, His-tag) Human Protein

Product data:

Product Type:	Recombinant Proteins
Description:	SEC22B (14-194, His-tag) human recombinant protein, 0.1 mg
Species:	Human
Expression Host:	E. coli
Expression cDNA Clone or AA Sequence:	MGSSHHHHHH SSGLVPRGSH MGSMLPLAAS MQEDEQSGRD LQQYQSQAKQ LFRKLNEQSP TRCTLEAGAM TFHYIIEQGV CYLVLCEAAF PKKLAFAYLE DLHSEFDEQH GKKVPTVSRP YSFIEFDTFI QKTKKLYIDS RARRNLGSIN TELQDVQRIM VANIEEVLQR GEALSALDSK ANNLSSLSKK YRQDAKYLMN RSTYA
Tag:	His-tag
Predicted MW:	23.3 kDa
Concentration:	lot specific
Purity:	>90% by SDS - PAGE
Buffer:	Presentation State: Purified State: Liquid purified protein Buffer System: 20 mM Tris-HCl buffer (pH 8.0) containing 2M urea, 10% glycerol, 0.15M NaCl
Preparation:	Liquid purified protein
Protein Description:	Recombinant human SEC22B protein, fused to His-tag at N-terminus, was expressed in E.coli.
Storage:	Store undiluted at 2-8°C for one week or (in aliquots) at -20°C to -80°C for longer. Avoid repeated freezing and thawing.
Stability:	Shelf life: one year from despatch.
RefSeq:	NP_004883
Locus ID:	9554
UniProt ID:	O75396
Cytogenetics:	1p12
Synonyms:	ERS-24; SEC22L1



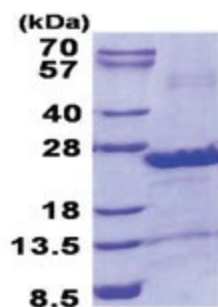
[View online »](#)

Summary:

The protein encoded by this gene is a member of the SEC22 family of vesicle trafficking proteins. It seems to complex with SNARE and it is thought to play a role in the ER-Golgi protein trafficking. This protein has strong similarity to Mus musculus and Cricetulus griseus proteins.[provided by RefSeq, Sep 2009]

Protein Pathways:

SNARE interactions in vesicular transport

Product images:

15% SDS-PAGE (3ug)