

Product datasheet for **AR50255PU-S**

Beta-casein (16-226, His-tag) Human Protein

Product data:

| | |
|---------------------------------------|---|
| Product Type: | Recombinant Proteins |
| Description: | Beta-casein (16-226, His-tag) human recombinant protein, 50 µg |
| Species: | Human |
| Expression Host: | E. coli |
| Expression cDNA Clone or AA Sequence: | <u>MGSSHHHHHH</u> <u>SSGLVPRGSH</u> <u>MGSHM</u> RETIE SLSSSEESIT EYKQKVEKVK HEDQQQGEDE HQDKIYPSFQ PQPLIYPFVE PIPYGFLPQN ILPLAQPAVV LPVPQPEIME VPKAKDTVYT KGRVMPVLKS PTIPFFDPQI PKLTDLENLH LPLPLLQPLM QQVPQPIPQT LALPPQPLWS VPQPKVLPPIP QQVVPYPQRA VPVQALLNQ ELLLNPTHQI YPVTQPLAPV HNPISV |
| Tag: | His-tag |
| Predicted MW: | 26.6 kDa |
| Concentration: | lot specific |
| Purity: | >95% by SDS - PAGE |
| Buffer: | Presentation State: Purified State: Liquid purified protein Buffer System: 20 mM Tris-HCl buffer (pH 8.0) containing 20% glycerol, 0.2M NaCl, 1 mM DTT, 0.1 mM PMSF |
| Preparation: | Liquid purified protein |
| Protein Description: | Recombinant human CSN2 protein, fused to His-tag at N-terminus, was expressed in E.coli and purified by using conventional chromatography. |
| Storage: | Store undiluted at 2-8°C for one week or (in aliquots) at -20°C to -80°C for longer. Avoid repeated freezing and thawing. |
| Stability: | Shelf life: one year from despatch. |
| RefSeq: | <u>NP_001289699</u> |
| Locus ID: | 1447 |
| UniProt ID: | <u>P05814</u> |
| Cytogenetics: | 4q13.3 |
| Synonyms: | CASB; PDC213 |



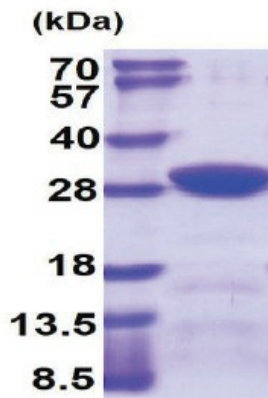
[View online »](#)

Summary:

This gene is a member of the beta casein family. There are two types of casein protein, beta (encoded by this gene) and kappa, both of which are secreted in human milk. Beta casein is the principal protein in human milk and the primary source of essential amino acids for a suckling infant. Beta and kappa casein proteins acting together form spherical micelles which bind within them important dietary minerals, such as calcium and phosphorous. In addition, the C-terminal 14 aa of the protein has antimicrobial activity, especially in preterm milk, displaying antibacterial activity against *S. aureus* and *Y. enterocolitica*. Alternative splicing results in multiple transcript variants. [provided by RefSeq, Jul 2020]

Protein Families:

Secreted Protein

Product images:

15% SDS-PAGE (3ug)