

Product datasheet for **AR50225PU-N**

GIPC2 (1-315, His-tag) Human Protein

Product data:

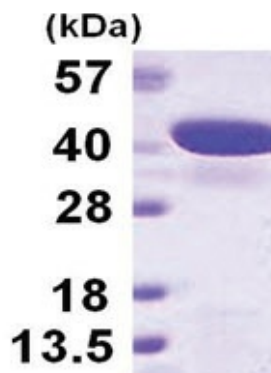
Product Type:	Recombinant Proteins
Description:	GIPC2 (1-315, His-tag) human recombinant protein, 0.5 mg
Species:	Human
Expression Host:	E. coli
Expression cDNA Clone or AA Sequence:	MGSSHHHHHH SSGLVPRGSH MGSHMPLKLR GKAKKSKET AGLVEGEPTG AGGGSLASR APARRLVFHA QLAHGSATGR VEGFSSIQEL YAQIAGAFEI SPSEILYCTL NTPKIDMERL LGGQLGLED FFAHVKGIEK EVNVYKSEDS LGLTITDNGV GYAFIKRIKD GGVIDSVKTI CVGDHIESIN GENIVGWRHY DVAKKLEKEL KEELFTMKLI EPKKAFFIEP RSKAGKSSGE KIGCGRATLR LRSKGPATVE EMPSETKAKA IEKIDDLVLEL YMGIRDIDLA TTMFEAGKDK VNPDEFAVAL DETLGDFAPP DEFVFDVWGV IGDARRRGL
Tag:	His-tag
Predicted MW:	36.9 kDa
Concentration:	lot specific
Purity:	>95% by SDS - PAGE
Buffer:	Presentation State: Purified State: Liquid purified protein Buffer System: 20 mM Tris-HCl buffer (pH 8.0) containing 1 mM DTT, 30% glycerol, 0.1M NaCl
Preparation:	Liquid purified protein
Protein Description:	Recombinant human GIPC2 protein, fused to His-tag at N-terminus, was expressed in E.coli and purified by using conventional chromatography techniques.
Storage:	Store undiluted at 2-8°C for one week or (in aliquots) at -20°C to -80°C for longer. Avoid repeated freezing and thawing.
Stability:	Shelf life: one year from despatch.
RefSeq:	NP_001291654
Locus ID:	54810
UniProt ID:	Q8TF65
Cytogenetics:	1p31.1
Synonyms:	SEMCAP-2; SEMCAP2



[View online »](#)

Summary:

GIPC2, also known as, SEMCAP2 contains 315 amino acid protein that localizes to the cytoplasm and contains one PDZ domain. GIPC2 is expressed at high levels in kidney and colon and at lower levels in adult liver. It might play important roles in human gastric cancer through modulation of growth factor signaling or cell adhesion.

Product images:

15% SDS-PAGE (3ug)