

## Product datasheet for **AR50221PU-N**

### LDLRAP1 (1-308, His-tag) Human Protein

#### Product data:

Product Type:	Recombinant Proteins
Description:	LDLRAP1 (1-308, His-tag) human recombinant protein, 0.5 mg
Species:	Human
Expression Host:	E. coli
Expression cDNA Clone or AA Sequence:	MGSSHHHHHH SSGLVPRGSH MDALKSAGRA LIRSPSLAKQ SWGGGGRHRK LPENWTDTRE TLLEGMLFSL KYLGMTLVEQ PKGEELSAAA IKRIVATAKA SGKKLQKVTL KVSPRGIILT DNLTNQLIEN VSIYRISYCT ADKMHDKVFA YIAQSQHNQS LECHAFLCK RKMAQAVTLT VAQAFKVAFE FWQVSKEEKE KRDKASQEGG DVLGARQDCT PPLKSLVATG NLLDLEETAK APLSTVSANT TNMDEVPRPQ ALSGSSVWWE LDDGLDEAFS RLAQSRTNPQ VLDTGLTAQD MHYAQCLSPV DWDKPDSSGT EQDDLFSF
Tag:	His-tag
Predicted MW:	36.1 kDa
Concentration:	lot specific
Purity:	>90% by SDS - PAGE
Buffer:	Presentation State: Purified State: Liquid purified protein Buffer System: 20 mM Tris-HCl buffer (pH 8.0) containing 2 mM DTT, 10% glycerol, 200 mM NaCl
Preparation:	Liquid purified protein
Protein Description:	Recombinant human LDLRAP1 protein, fused to His-tag at N-terminus, was expressed in E.coli and purified by using conventional chromatography techniques.
Storage:	Store undiluted at 2-8°C for one week or (in aliquots) at -20°C to -80°C for longer. Avoid repeated freezing and thawing.
Stability:	Shelf life: one year from despatch.
RefSeq:	<a href="#">NP_056442</a>
Locus ID:	26119
UniProt ID:	<a href="#">Q5SW96</a> , <a href="#">B3KR97</a>
Cytogenetics:	1p36.11



[View online »](#)

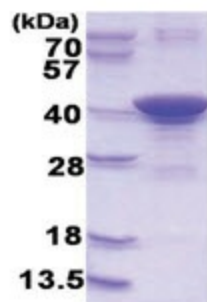
**Synonyms:** ARH; ARH1; ARH2; FHCB1; FHCB2; FHCL4

**Summary:** The protein encoded by this gene is a cytosolic protein which contains a phosphotyrosine binding (PTD) domain. The PTD domain has been found to interact with the cytoplasmic tail of the LDL receptor. Mutations in this gene lead to LDL receptor malfunction and cause the disorder autosomal recessive hypercholesterolaemia. [provided by RefSeq, Jul 2008]

**Protein Families:** Druggable Genome

**Protein Pathways:** Endocytosis

**Product images:**



15% SDS-PAGE (3ug)