

## Product datasheet for **AR50218PU-S**

### DUSP21 (1-190, His-tag) Human Protein

#### Product data:

Product Type:	Recombinant Proteins
Description:	DUSP21 (1-190, His-tag) human recombinant protein, 50 µg
Species:	Human
Expression Host:	E. coli
Expression cDNA Clone or AA Sequence:	MGSSHHHHHH SSGLVPRGSH MGSHTASAS SFSSSQGVQQ PSYFSFSQIT RSLFLSNGVA ANDKLLSSN RITAVNASV EVNVFFEGI QYIKVPVTD RDSRLYDFFD PIADLIHTID MRQGRLLHC MAGVRSASL CLAYLMKYHS MSLDAHTWT KSRRPIRPN NGFWEQLINY EFKLFNNNTV RMINSPVGN PDIYEKDLRM MISM
Tag:	His-tag
Predicted MW:	24.1 kDa
Concentration:	lot specific
Purity:	>90% by SDS - PAGE
Buffer:	Presentation State: Purified State: Liquid purified protein Buffer System: 20 mM Tris-HCl buffer (pH 8.0) containing 2 mM DTT, 20% glycerol, 200 mM NaCl
Preparation:	Liquid purified protein
Protein Description:	Recombinant human DUSP21 protein, fused to His-tag at N-terminus, was expressed in E.coli and purified by using conventional chromatography techniques.
Storage:	Store undiluted at 2-8°C for one week or (in aliquots) at -20°C to -80°C for longer. Avoid repeated freezing and thawing.
Stability:	Shelf life: one year from despatch.
RefSeq:	<a href="#">NP_071359</a>
Locus ID:	63904
UniProt ID:	<a href="#">Q9H596</a>
Cytogenetics:	Xp11.3
Synonyms:	LMWDSP21



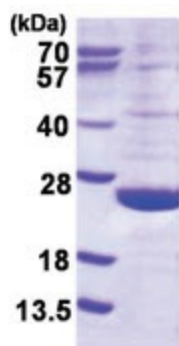
[View online »](#)

**Summary:**

This gene encodes a member of the dual specificity phosphatase family, specifically the low molecular weight dual specificity phosphatase family. The encoded protein localizes to both the cytoplasm and the nucleus and functions to remove phosphate groups from phosphotyrosine and phosphothreonine residues.[provided by RefSeq, Mar 2009]

**Protein Families:**

Druggable Genome, Phosphatase

**Product images:**

15% SDS-PAGE (3ug)