

## Product datasheet for **AR50196PU-S**

### **RDH12 (39-316, His-tag) Human Protein**

#### Product data:

Product Type:	Recombinant Proteins
Description:	RDH12 (39-316, His-tag) human recombinant protein, 50 µg
Species:	Human
Expression Host:	E. coli
Expression cDNA Clone or AA Sequence:	MGSSHHHHHH SSGLVPRGSH MGSHEMGKVV ITGANTGIGK ETARELASRG ARVYIACRDV LKGEAASEI RVDTKNSQVL VRKLDLSDTK SIRAFEGFL AEEKQLHILI NNAGVMMCPY SKTADGFETH LGVNHLGHFL LTYLLLERLK VSAPARVVNV SVAHHIGKI PFHDLQSEKR YSRGFAYCHS KLANVLFTR LAKRLQGTGV TTYAVHPGVV RSELVRHSSL LCLLWRLFSP FVKTAREGAQ TSLHCALEAG LEPLSGKYFS DCKRTWVSPR ARNNKTAERL WNVSCCELLGI RWE
Tag:	His-tag
Predicted MW:	33.5 kDa
Concentration:	lot specific
Purity:	>90% by SDS - PAGE
Buffer:	Presentation State: Purified State: Liquid purified protein Buffer System: 20 mM Tris-HCl buffer (pH 8.0) containing 2 mM DTT, 40% glycerol, 0.2M NaCl
Preparation:	Liquid purified protein
Protein Description:	Recombinant human RDH12 protein, fused to His-tag at N-terminus, was expressed in E.coli and purified by using conventional chromatography techniques.
Storage:	Store undiluted at 2-8°C for one week or (in aliquots) at -20°C to -80°C for longer. Avoid repeated freezing and thawing.
Stability:	Shelf life: one year from despatch.
RefSeq:	<a href="#">NP_689656</a>
Locus ID:	145226
UniProt ID:	<a href="#">Q96NR8</a> , <a href="#">A0A0S2Z613</a>
Cytogenetics:	14q24.1
Synonyms:	LCA13; RP53; SDR7C2



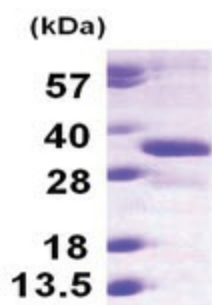
[View online »](#)

**Summary:** The protein encoded by this gene is an NADPH-dependent retinal reductase whose highest activity is toward 9-cis and all-trans-retinol. The encoded enzyme also plays a role in the metabolism of short-chain aldehydes but does not exhibit steroid dehydrogenase activity. Defects in this gene are a cause of Leber congenital amaurosis type 13 and Retinitis Pigmentosa 53. [provided by RefSeq, Sep 2015]

**Protein Families:** Druggable Genome

**Protein Pathways:** Metabolic pathways, Retinol metabolism

**Product images:**



15% SDS-PAGE (3ug)