

## Product datasheet for **AR50018PU-S**

### **KITLG / SCF (26-189) (recombinant) Human Protein**

#### **Product data:**

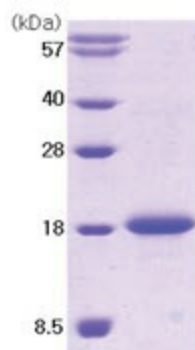
<b>Product Type:</b>	Recombinant Proteins
<b>Description:</b>	KITLG / SCF (26-189) (recombinant) human protein, 0.1 mg
<b>Species:</b>	Human
<b>Expression Host:</b>	E. coli
<b>Expression cDNA Clone or AA Sequence:</b>	MKEICGNPVT DNVKDITKLV ANLPNDYMIT LNYVAGMDVL PSHCWLRDMV IQLSLSLTLL LDKFSNISEG LSNYSIIDKL GKIVDDLVL MEENAPKNIK ESPKRPETRS FTPEEFSIF NRSIDAFKDF MVASDTSDCV LSSTLGPEKD SRVSVTKPFM LPPVA
<b>Predicted MW:</b>	18 kDa
<b>Concentration:</b>	lot specific
<b>Purity:</b>	>95% by SDS - PAGE
<b>Buffer:</b>	Presentation State: Purified State: Liquid purified protein Buffer System: Phosphate buffer saline (pH 7.4) containing 10% glycerol
<b>Preparation:</b>	Liquid purified protein
<b>Storage:</b>	Store undiluted at 2-8°C for one week or (in aliquots) at -20°C to -80°C for longer. Avoid repeated freezing and thawing.
<b>Stability:</b>	Shelf life: one year from despatch.
<b>RefSeq:</b>	<a href="#">NP_001334085</a>
<b>Locus ID:</b>	17311
<b>UniProt ID:</b>	<a href="#">P20826</a>
<b>Cytogenetics:</b>	10 51.4 cM
<b>Synonyms:</b>	blz; Clo; Con; contrasted; Gb; Kitlg; Mgf; SCF; SF; Sl; SLF



[View online »](#)

**Summary:**

Ligand for the receptor-type protein-tyrosine kinase KIT. Plays an essential role in the regulation of cell survival and proliferation, hematopoiesis, stem cell maintenance, gametogenesis, mast cell development, migration and function, and in melanogenesis. KITLG/SCF binding can activate several signaling pathways. Promotes phosphorylation of PIK3R1, the regulatory subunit of phosphatidylinositol 3-kinase, and subsequent activation of the kinase AKT1. KITLG/SCF and KIT also transmit signals via GRB2 and activation of RAS, RAF1 and the MAP kinases MAPK1/ERK2 and/or MAPK3/ERK1. KITLG/SCF and KIT promote activation of STAT family members STAT1, STAT3 and STAT5. KITLG/SCF and KIT promote activation of PLCG1, leading to the production of the cellular signaling molecules diacylglycerol and inositol 1,4,5-trisphosphate. KITLG/SCF acts synergistically with other cytokines, probably interleukins.[UniProtKB/Swiss-Prot Function]

**Product images:**

15% SDS-PAGE (3ug)