

## Product datasheet for **AR50007PU-S**

### Prolactin / PRL (recombinant) Human Protein

#### Product data:

Product Type:	Recombinant Proteins
Description:	Prolactin / PRL (recombinant) human protein, 0.1 mg
Species:	Human
Expression Host:	E. coli
Expression cDNA Clone or AA Sequence:	MLPICPGGAA RCQVTLRDLF DRAVLSHYI HNLSEMFS FDKRYTHGRG FITKAINSCH TSSLATPEDK EQAQQMNQKD FLSLIVSILR SWNEPLYHLV TEVRGMQEAP EAILSKAWEI EEQTKRLLG MELIVSQVHP ETKENEIYPV WSGLPQLQMA DEESRLSAYY NLLHCLRRDS HKIDNYLKLL KCRIIHNNNC
Predicted MW:	23 kDa
Concentration:	lot specific
Purity:	>95% by SDS - PAGE
Buffer:	Presentation State: Purified State: Liquid purified protein Buffer System: Phosphate buffer saline (pH 7.4)
Bioactivity:	Biological: Measured in a cell proliferation assay using Nb2-11 Rat lymphoma cells. The ED50 for this effect is less or equal to 0.5 ng/ml.
Endotoxin:	< 1.0 EU per 1 microgram of protein (determined by LAL method)
Preparation:	Liquid purified protein
Storage:	Store undiluted at 2-8°C for one week or (in aliquots) at -20°C to -80°C for longer. Avoid repeated freezing and thawing.
Stability:	Shelf life: one year from despatch.
RefSeq:	<a href="#">NP_000939</a>
Locus ID:	5617
UniProt ID:	<a href="#">P01236</a> , <a href="#">Q5THQ0</a>
Cytogenetics:	6p22.3
Synonyms:	GHA1



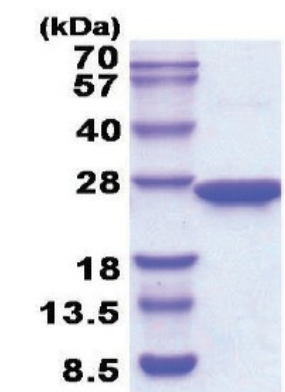
[View online »](#)

**Summary:** This gene encodes the anterior pituitary hormone prolactin. This secreted hormone is a growth regulator for many tissues, including cells of the immune system. It may also play a role in cell survival by suppressing apoptosis, and it is essential for lactation. Alternative splicing results in multiple transcript variants that encode the same protein. [provided by RefSeq, Aug 2011]

**Protein Families:** Druggable Genome, Secreted Protein

**Protein Pathways:** Cytokine-cytokine receptor interaction, Jak-STAT signaling pathway, Neuroactive ligand-receptor interaction

### Product images:



15% SDS-PAGE (3ug)