

Product datasheet for **AR09993PU-L**

Glutaminase 1 / glsA1 (1-310, His-tag) Escherichia coli Protein

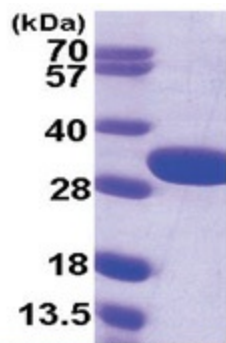
Product data:

Product Type:	Recombinant Proteins
Description:	Glutaminase 1 / glsA1 (1-310, His-tag) e. coli recombinant protein, 0.5 mg
Species:	Escherichia coli
Expression Host:	E. coli
Expression cDNA Clone or AA Sequence:	<u>MGSSHHHHHH SSSLVPRGSH</u> MLDANKLQQA VDQAYTQFHS LNGGQNADYI PFLANVPGQL AAVAVTCDG NVYSAGDSY RFALESISKV CTLALALEDV GPQAVQDKIG ADPTGLPFNS VIALELHGGK PLSPLVNAGA IATTSLINAE NVEQRWQRIL HIQQQLAGEQ VALSDEVNQS EQTTNFHNRA IAWLLYSAGY LYCDAMEACD VYTRQCSTLL NTIELATLGA TLAAGGVNPL THKRVLQADN VPYILAEMMM EGLYGRSGDW AYRVGLPGKS GVGGGILAVV PGVMGIAAFS PPLDEDGNSV RGQKMASVA KQLGYNVFKG
Tag:	His-tag
Concentration:	lot specific
Purity:	>95%
Buffer:	Presentation State: Purified State: Liquid purified protein Buffer System: 20 mM Tris-HCl buffer (pH 8.0) containing 1 mM DTT, 10% glycerol, 100 mM NaCl
Preparation:	Liquid purified protein
Protein Description:	Recombinant E.coli glsA1 protein, fused to His-tag at N-terminus, was expressed in E.coli and purified by using conventional chromatography techniques.
Storage:	Store undiluted at 2-8°C for up to two weeks or (in aliquots) at -20°C or -70°C for longer. Avoid repeated freezing and thawing.
Stability:	Shelf life: one year from despatch.
Summary:	GlsA1 (glutaminase1) belongs to the large superfamily of serine-dependent beta-lactamases and penicillin-binding proteins. They are present in most bacteria and eukaryotes and catalyze the hydrolytic deamidation of l-glutamine to l-glutamate and free NH ₄ ⁺ .



[View online »](#)

Product images:



15% SDS-PAGE (3ug)