

Product datasheet for **AR09990PU-L**

CDCA8 / Borealin (19-280, His-tag) Human Protein

Product data:

Product Type:	Recombinant Proteins
Description:	CDCA8 / Borealin (19-280, His-tag) human recombinant protein, 0.25 mg
Species:	Human
Expression Host:	E. coli
Expression cDNA Clone or AA Sequence:	<u>MGSSHHHHHH SSGLVPRGSH MRKLASFLKD</u> FDREVEIRIK QIESDRQNLL KEVDNLYNIE ILRLPKALRE MNWLDYFALG GNKQALEEAA TADLDITEIN KLTAEQIQT LKSAKTRKVI QVDEMIVEEE EEEENERKNL QTARVKRCP SKKRTQSIQG KGKGKRSSRA NTVTPAVGRL EVSMVKPTPG LTPRFDSRVF KTPGLRTPAA GERIYNISGN GSPLADSKEI FLTVPVGGGE SLRLLASDLQ RHSIAQLDPE ALGNIKKLSN RLAQICSSIR THK
Tag:	His-tag
Predicted MW:	31.6 kDa
Concentration:	lot specific
Purity:	>90%
Buffer:	Presentation State: Purified State: Liquid purified protein Buffer System: 20mM Tris-HCl buffer (pH 8.0) containing 1mM DTT, 50% glycerol, 1mM EDTA, 0.2M NaCl
Preparation:	Liquid purified protein
Protein Description:	Recombinant human CDCA8 protein, fused to His-tag at N-terminus, was expressed in E.coli and purified by using conventional chromatography techniques.
Storage:	Store undiluted at 2-8°C for up to two weeks or (in aliquots) at -20°C or -70°C for longer. Avoid repeated freezing and thawing.
Stability:	Shelf life: one year from despatch.
RefSeq:	<u>NP_001243804</u>
Locus ID:	55143
UniProt ID:	<u>Q53HL2</u>
Cytogenetics:	1p34.3
Synonyms:	BOR; BOREALIN; DasraB; MESRGP



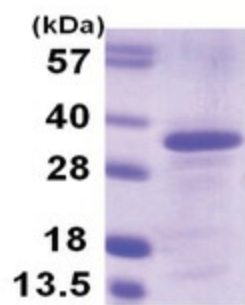
[View online »](#)

Summary:

This gene encodes a component of the chromosomal passenger complex. This complex is an essential regulator of mitosis and cell division. This protein is cell-cycle regulated and is required for chromatin-induced microtubule stabilization and spindle formation. Alternate splicing results in multiple transcript variants. Pseudogenes of this gene are found on chromosomes 7, 8 and 16. [provided by RefSeq, Apr 2013]

Protein Families:

Druggable Genome

Product images:

15% SDS-PAGE (3ug)