

Product datasheet for **AR09981PU-L**

cysH (1-244, His-tag) Escherichia coli Protein

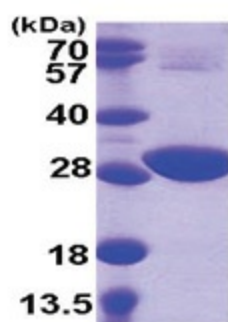
Product data:

Product Type:	Recombinant Proteins
Description:	cysH (1-244, His-tag) e. coli recombinant protein, 0.5 mg
Species:	Escherichia coli
Expression Host:	E. coli
Expression cDNA Clone or AA Sequence:	<u>MGSSHHHHHH SSSLVPRGSH</u> MSKLDLNLN ELPKVDRILA LAETNAELEK LDAEGRVAWA LDNLPGEYVL SSSFGIQA AV SLHLVNQIRP DIPVILTDTG YLFPETYRFI DELTDKLN LKVYRATESA AWQEARYGKL WEQGVGIEK YNDINKVEPM NRALKELNAQ TWFAGLRREQ SGSRANLPVL AIQRGVFKVL PIIDWDNRTI YQYLQKHGLK YHPLWDEGYL SVGDTHTRK WEPGMAEEET RFFGLKRECG LHEG
Tag:	His-tag
Predicted MW:	30.1 kDa
Concentration:	lot specific
Purity:	>90%
Buffer:	Presentation State: Purified State: Liquid purified protein Buffer System: 20 mM Tris-HCl buffer (pH 8.0) containing 1 mM DTT, 10% glycerol, 50 mM NaCl
Preparation:	Liquid purified protein
Protein Description:	Recombinant E.coli cysH protein, fused to His-tag at N-terminus, was expressed in E.coli and purified by using conventional chromatography techniques.
Storage:	Store undiluted at 2-8°C for up to two weeks or (in aliquots) at -20°C or -70°C for longer. Avoid repeated freezing and thawing.
Stability:	Shelf life: one year from despatch.
Summary:	CysH (Phosphoadenosine phosphosulfate reductase) belongs to the PAPS reductase family, specifically those acting on a sulfur group of donors with a disulfide as acceptor. In enzymology, a cysH is an enzyme that catalyzes the chemical reaction. Three substrates of this enzyme are adenosine 3',5'-bisphosphate, sulfite, and thioredoxin disulfide, whereas its two products are 3'-phosphoadenylyl sulfate and thioredoxin.



[View online »](#)

Product images:



15% SDS-PAGE (3ug)