

Product datasheet for **AR09974PU-L**

Galectin-10 (1-142, His-tag) Human Protein

Product data:

Product Type:	Recombinant Proteins
Description:	Galectin-10 (1-142, His-tag) human recombinant protein, 0.5 mg
Species:	Human
Expression Host:	E. coli
Expression cDNA Clone or AA Sequence:	<u>MGSSHHHHHH SSGLVPRGSH</u> MSLLPVPYTE AASLSTGSTV TIKGRPLACF LNEPYLQVDF HTEMKEESDI VFHFQVCFGR RVMNSREYG AWKQQVESKN MPFQDQGFEF LSISVLPDKY QVMVNGQSSY TFDHRIKPEA VKMVQVWRDI SLTKFNVSYL KR
Tag:	His-tag
Predicted MW:	18.6 kDa
Concentration:	lot specific
Purity:	>90%
Buffer:	Presentation State: Purified State: Liquid purified protein Buffer System: 20 mM Tris-HCl buffer (pH 8.0) containing 1 mM DTT, 10% glycerol, 0.1M NaCl
Preparation:	Liquid purified protein
Protein Description:	Recombinant human Galectin-10 protein, fused to His-tag at N-terminus, was expressed in E.coli and purified by using conventional chromatography techniques.
Storage:	Store undiluted at 2-8°C for up to two weeks or (in aliquots) at -20°C or -70°C for longer. Avoid repeated freezing and thawing.
Stability:	Shelf life: one year from despatch.
RefSeq:	<u>NP_001819</u>
Locus ID:	1178
UniProt ID:	<u>Q05315</u>
Cytogenetics:	19q13.2
Synonyms:	Gal-10; GAL10; LGALS10; LGALS10A; LPPL_HUMAN



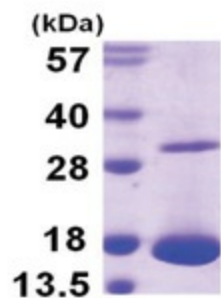
[View online »](#)

Summary:

Lysophospholipases are enzymes that act on biological membranes to regulate the multifunctional lysophospholipids. The protein encoded by this gene is a lysophospholipase expressed in eosinophils and basophils. It hydrolyzes lysophosphatidylcholine to glycerophosphocholine and a free fatty acid. This protein may possess carbohydrate or IgE-binding activities. It is both structurally and functionally related to the galectin family of beta-galactoside binding proteins. It may be associated with inflammation and some myeloid leukemias. [provided by RefSeq, Jul 2008]

Protein Families:

Secreted Protein

Product images:

15% SDS-PAGE (3ug)