

Product datasheet for **AR09948PU-N**

SEC13 (1-322, His-tag) Human Protein

Product data:

Product Type:	Recombinant Proteins
Description:	SEC13 (1-322, His-tag) human recombinant protein, 0.1 mg
Species:	Human
Expression Host:	E. coli
Expression cDNA Clone or AA Sequence:	<u>MGSSHHHHHH SSGLVPRGSH</u> MVSVINTVDT SHEDMIHDAQ MDYYGTRLAT CSSDRSVKIF DVRN GGQILI ADLRGHEGPV WQVAWAHPMY GNILASCSYD RKV I I WREEN GTWEKSHEHA GHDSSVNSVC WAPHDYGLIL ACGSSDGAIS LLTYTGEGQW EVKINNAHT IGCNAVSWAP AVVPGSLIDH PSGQKPNYIK RFASGGCDNL IKLWKEEEDG QWKEEQKLEA HSDWVRDVAW APSIGLPTST IASCSQDGRV FIWTCDDASS NTWSPKLLHK FNDVWWHVSW SITANILAVS GGDNKVTLWK ESVDGQWVCI SDVNKGQGSV SASVTEGQQN EQ
Tag:	His-tag
Predicted MW:	37.7 kDa
Concentration:	lot specific
Purity:	>95%
Buffer:	Presentation State: Purified State: Liquid purified protein Buffer System: 20 mM Tris-HCl buffer (pH 8.0) containing 1 mM DTT, 10% glycerol, 100 mM NaCl
Preparation:	Liquid purified protein
Protein Description:	Recombinant human SEC13 protein, fused to His-tag at N-terminus, was expressed in E.coli and purified by using conventional chromatography techniques.
Storage:	Store undiluted at 2-8°C for up to two weeks or (in aliquots) at -20°C or -70°C for longer. Avoid repeated freezing and thawing.
Stability:	Shelf life: one year from despatch.
RefSeq:	<u>NP_001129498</u>
Locus ID:	6396
UniProt ID:	<u>P55735</u>
Cytogenetics:	3p25.3

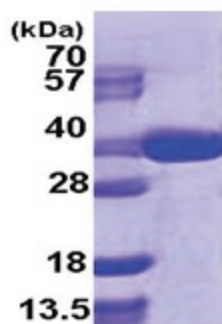


[View online »](#)

Synonyms: D3S1231E; npp-20; SEC13L1; SEC13R

Summary: The protein encoded by this gene belongs to the SEC13 family of WD-repeat proteins. It is a constituent of the endoplasmic reticulum and the nuclear pore complex. It has similarity to the yeast SEC13 protein, which is required for vesicle biogenesis from endoplasmic reticulum during the transport of proteins. Multiple alternatively spliced transcript variants have been found. [provided by RefSeq, Oct 2008]

Product images:



15% SDS-PAGE (3ug)