

## Product datasheet for **AR09942PU-S**

### RhoD (18-207, His-tag) Human Protein

#### Product data:

Product Type:	Recombinant Proteins
Description:	RhoD (18-207, His-tag) human recombinant protein, 10 µg
Species:	Human
Expression Host:	E. coli
Expression cDNA Clone or AA Sequence:	<u>MGSSHHHHHH SSGLVPRGSH</u> MKWLVGDG GCGKTSLLMV FADGAFPEsy TPTVFERyMV NLQVKGKPVH LHIWDTAGQD DYDRLRPLFY PDASVLLLCF DVTSPNSFDN IFNRWYPEVN HFCKKVPIIV VGCKTDLRKD KSLVNKLRRN GLEPVTYHRG QEMARSVGAV AYLECSARLH DNVHAVFQEA AEVALSSRGR NFWRRITQGF C
Tag:	His-tag
Predicted MW:	23.8 kDa
Concentration:	lot specific
Purity:	>90%
Buffer:	Presentation State: Purified State: Liquid purified protein Buffer System: 20 mM Tris-HCl buffer (pH 8.0) containing 5 mM DTT, 50% glycerol, 200 mM NaCl, 2 mM EDTA, 0.1 mM PMSF
Preparation:	Liquid purified protein
Protein Description:	Recombinant human RhoD protein, fused to His-tag at N-terminus, was expressed in E.coli and purified by using conventional chromatography techniques.
Storage:	Store undiluted at 2-8°C for up to two weeks or (in aliquots) at -20°C or -70°C for longer. Avoid repeated freezing and thawing.
Stability:	Shelf life: one year from despatch.
RefSeq:	<u>NP_001287815</u>
Locus ID:	29984
UniProt ID:	<u>E9PIG5</u>
Cytogenetics:	11q13.2
Synonyms:	ARHD; Rho; RHOHP1; RHOM



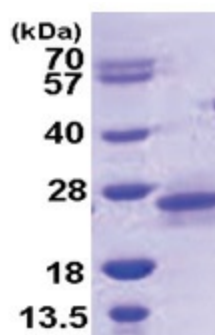
[View online »](#)

**Summary:**

Ras homolog, or Rho, proteins interact with protein kinases and may serve as targets for activated GTPase. They play a critical role in muscle differentiation. The protein encoded by this gene binds GTP and is a member of the small GTPase superfamily. It is involved in endosome dynamics and reorganization of the actin cytoskeleton, and it may coordinate membrane transport with the function of the cytoskeleton. Two transcript variants encoding different isoforms have been found for this gene. [provided by RefSeq, Jul 2014]

**Protein Pathways:**

Axon guidance

**Product images:**

15% SDS-PAGE (3ug)