

Product datasheet for **AR09937PU-L**

PSMB9 (21-219, His-tag) Human Protein

Product data:

Product Type:	Recombinant Proteins
Description:	PSMB9 (21-219, His-tag) human recombinant protein, 0.25 mg
Species:	Human
Expression Host:	E. coli
Expression cDNA Clone or AA Sequence:	<u>MGSSHHHHHH</u> <u>SSGLVPRGSH</u> <u>MTTIMAVEFD</u> GGVMGSDSR VSAGEAVNR VFDKLSPLHE RIYCALSGS AADAQAVADMA AYQLELHGIE LEEPPLVLA ANVVRNISYK YREDLSAHLM VAGWDQREGG QVYGTGGML TRQPFAIGGS GSTFIYGYVD AAYKPGMSPE ECRRTTDAI ALAMSRDGSS GGVIYLVIT AAGVDHRVIL GNELPKFYDE
Tag:	His-tag
Predicted MW:	23.5 kDa
Concentration:	lot specific
Purity:	>90%
Buffer:	Presentation State: Purified State: Liquid purified protein Buffer System: 20 mM Tris-HCl buffer (pH 8.0) containing 10% glycerol, 50 mM NaCl
Preparation:	Liquid purified protein
Protein Description:	Recombinant human PSMB9 protein, fused to His-tag at N-terminus, was expressed in E.coli and purified by using conventional chromatography.
Storage:	Store undiluted at 2-8°C for up to two weeks or (in aliquots) at -20°C or -70°C for longer. Avoid repeated freezing and thawing.
Stability:	Shelf life: one year from despatch.
RefSeq:	<u>NP_002791</u>
Locus ID:	5698
UniProt ID:	<u>P28065</u> , <u>A0A1U9X8D7</u>
Cytogenetics:	6p21.32
Synonyms:	beta1i; LMP2; PRAAS3; PSMB6i; RING12



[View online »](#)

Summary:

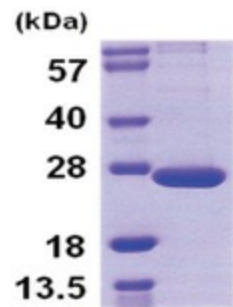
The proteasome is a multicatalytic proteinase complex with a highly ordered ring-shaped 20S core structure. The core structure is composed of 4 rings of 28 non-identical subunits; 2 rings are composed of 7 alpha subunits and 2 rings are composed of 7 beta subunits. Proteasomes are distributed throughout eukaryotic cells at a high concentration and cleave peptides in an ATP/ubiquitin-dependent process in a non-lysosomal pathway. An essential function of a modified proteasome, the immunoproteasome, is the processing of class I MHC peptides. This gene encodes a member of the proteasome B-type family, also known as the T1B family, that is a 20S core beta subunit. This gene is located in the class II region of the MHC (major histocompatibility complex). Expression of this gene is induced by gamma interferon and this gene product replaces catalytic subunit 1 (proteasome beta 6 subunit) in the immunoproteasome. Proteolytic processing is required to generate a mature subunit. [provided by RefSeq, Mar 2010]

Protein Families:

Druggable Genome, Protease

Protein Pathways:

Proteasome

Product images:

15% SDS-PAGE (3ug)